

Recombinant

DGRmAb®

SHP2 (DGR19305) Rabbit mAb

db14530

Package : 10µL 20µL 50µL 100µL

Product Name : SHP2 (DGR19305) Rabbit mAb**Cat.No.:** db14530**Synonyms :** CFC; NS1; JMML; SHP2; BPTP3; PTP2C; METCDS; PTP-1D; SH-PTP2; SH-PTP3**Application :** WB, IP**Reactivity :** Human,Mouse,Rat**Host species :** Rabbit**Background**

The protein encoded by this gene is a member of the protein tyrosine phosphatase (PTP) family. PTPs are known to be signaling molecules that regulate a variety of cellular processes including cell growth, differentiation, mitotic cycle, and oncogenic transformation. This PTP contains two tandem Src homology-2 domains, which function as phospho-tyrosine binding domains and mediate the interaction of this PTP with its substrates. This PTP is widely expressed in most tissues and plays a regulatory role in various cell signaling events that are important for a diversity of cell functions, such as mitogenic activation, metabolic control, transcription regulation, and cell migration. Mutations in this gene are a cause of Noonan syndrome as well as acute myeloid leukemia. [provided by RefSeq, Aug 2016]

Immunogen

Recombinant protein of human SHP2

Gene ID

5781

Swiss Prot

Q06124

Synonyms

CFC; NS1; JMML; SHP2; BPTP3; PTP2C; METCDS; PTP-1D; SH-PTP2; SH-PTP3

Reactivity

Human,Mouse,Rat

Application

WB, IP

Recommended dilution

WB: 1:1000-1:5000

IP: 1:20-1:50

Calculated MW

68 kDa

Observed MW

68 kDa

Host species

Rabbit

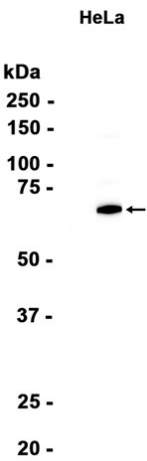
Clonality

Monoclonal

Clonality No.

DGR19305

Isotype	IgG
Purity	Affinity Purification
Conjugation	Un-conjugated
Storage Stability	Store at -20°C. Supplied in 50mM Tris-Glycine(pH 7.4), 0.15M NaCl, 40% Glycerol, 0.01% sodium azide and 0.05% BSA. Stable for 12 months from date of receipt.



Western blot analysis of extracts from HeLa cells using db14530 at 1:1000.