

Recombinant

DGRmAb®

SIRT6 (DGR19215) Rabbit mAb

db14535

Package : 10µL 20µL 50µL 100µL

Product Name : SIRT6 (DGR19215) Rabbit mAb**Cat.No.:** db14535**Synonyms** : SIR2L6**Application** : WB**Reactivity** : Human**Host species** : Rabbit**Background**

This gene encodes a member of the sirtuin family of NAD-dependent enzymes that are implicated in cellular stress resistance, genomic stability, aging and energy homeostasis. The encoded protein is localized to the nucleus, exhibits ADP-ribosyl transferase and histone deacetylase activities, and plays a role in DNA repair, maintenance of telomeric chromatin, inflammation, lipid and glucose metabolism. Alternative splicing results in multiple transcript variants encoding different isoforms. [provided by RefSeq, Mar 2016]

Immunogen

A synthetic peptide of human SIRT6

Gene ID

51548

Swiss Prot

Q8N6T7

Synonyms

SIR2L6

Reactivity

Human

Application

WB

Recommended dilution

WB: 1:1000-1:5000

Calculated MW

39 kDa

Observed MW

39 kDa

Host species

Rabbit

Clonality

Monoclonal

Clonality No.

DGR19215

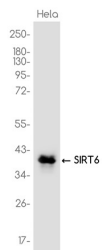
Isotype

IgG

Purity

Affinity Purification

Conjugation	Un-conjugated
Storage Stability	Store at -20°C. Supplied in 50mM Tris-Glycine(pH 7.4), 0.15M NaCl, 40% Glycerol, 0.01% sodium azide and 0.05% BSA. Stable for 12 months from date of receipt.



Western blot analysis of extracts from HeLa cells using db14535 at 1:1000.