

Recombinant

DGRmAb®

## Netrin 1 (DGR19045) Rabbit mAb

db14569

Package : 10µL 20µL 50µL 100µL

**Product Name** : Netrin 1 (DGR19045) Rabbit mAb**Cat.No.:** db14569**Synonyms** : NTN1L**Application** : WB**Reactivity** : Human,Mouse,Rat**Host species** : Rabbit**Background**

Netrin is included in a family of laminin-related secreted proteins. The function of this gene has not yet been defined; however, netrin is thought to be involved in axon guidance and cell migration during development. Mutations and loss of expression of netrin suggest that variation in netrin may be involved in cancer development. [provided by RefSeq, Jul 2008]

**Immunogen**

A synthetic peptide of human Netrin 1

**Gene ID**

9423

**Swiss Prot**

O95631

**Synonyms**

NTN1L

**Reactivity**

Human,Mouse,Rat

**Application**

WB

**Recommended dilution**

WB: 1:1000-1:5000

**Calculated MW**

68 kDa

**Observed MW**

68 kDa

**Host species**

Rabbit

**Clonality**

Monoclonal

**Clonality No.**

DGR19045

**Isotype**

IgG

**Purity**

Affinity Purification

**Conjugation**

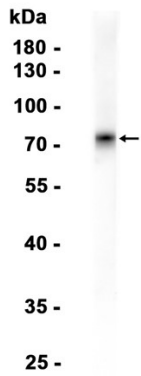
Un-conjugated

**Storage Stability**

Store at -20°C. Supplied in 50mM Tris-Glycine(pH 7.4), 0.15M NaCl, 40% Glycerol, 0.01% sodium

azide and 0.05% BSA. Stable for 12 months from date of receipt.

Mouse kidney



Western blot analysis of extracts from Mouse kidney tissue using db14569 at 1:1000.