

Recombinant

DGRmAb®

Apolipoprotein A I (DGR18985) Rabbit mAb

db14587

Package : 10µL 20µL 50µL 100µL

Product Name : Apolipoprotein A I (DGR18985) Rabbit mAb**Cat.No.:** db14587**Synonyms** : apo(a)**Application** : WB, IHC-P, ICC/IF, FC, IP**Reactivity** : Human**Host species** : Rabbit**Background**

This gene encodes apolipoprotein A-I, which is the major protein component of high density lipoprotein (HDL) in plasma. The encoded preproprotein is proteolytically processed to generate the mature protein, which promotes cholesterol efflux from tissues to the liver for excretion, and is a cofactor for lecithin cholesterolacyltransferase (LCAT), an enzyme responsible for the formation of most plasma cholesteryl esters. This gene is closely linked with two other apolipoprotein genes on chromosome 11. Defects in this gene are associated with HDL deficiencies, including Tangier disease, and with systemic non-neuropathic amyloidosis. Alternative splicing results in multiple transcript variants, at least one of which encodes a preproprotein. [provided by RefSeq, Dec 2015]

Immunogen

A synthetic peptide of human Apolipoprotein A I

Gene ID

335

Swiss Prot

P02647

Synonyms

apo(a)

Reactivity

Human

Application

WB, IHC-P, ICC/IF, FC, IP

Recommended dilution

WB: 1:1000

IHC-P: 1:100

ICC/IF: 1:100-1:200

FC: 1:20-1:50

IP: 1:50

Calculated MW

31 kDa

Observed MW

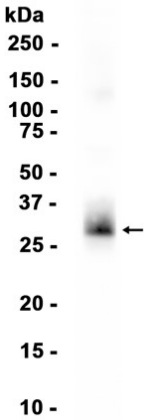
31 kDa

Host species

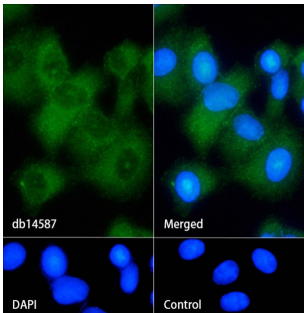
Rabbit

Clonality	Monoclonal
Clonality No.	DGR18985
Isotype	IgG
Purity	Affinity Purification
Conjugation	Un-conjugated
Storage Stability	Store at -20°C. Supplied in 50mM Tris-Glycine(pH 7.4), 0.15M NaCl, 40% Glycerol, 0.01% sodium azide and 0.05% BSA. Stable for 12 months from date of receipt.

Human plasma



Western blot analysis of extracts from Human plasma tissue using db14587 at 1:1000.



Immunofluorescence analysis of HepG2 cells labelling Apolipoprotein A I with db14587.

The cells were fixed with cold 100% methanol (10min, 4℃) and blocked in 1% BSA/10% normal goat serum/0.3M glycine in 0.1% PBS-Tween 20 for 1h. The cells were then incubate with db14587 (1:100) at room temprature for 1h, followed by a further incubation at room temperature for 45min with Goat Anti Rabbit IgG (H+L)-AF488 (db10005, shown in green). Nuclear DNA was labeled in blue with DAPI.

Control: Secondary antibody only.