

Recombinant

DGRmAb®

## CHD3 (DGR16989) Rabbit mAb

db14757

Package : 10µL 20µL 50µL 100µL

**Product Name :** CHD3 (DGR16989) Rabbit mAb**Cat.No.:** db14757**Synonyms :** ZFH; Mi-2a; Mi2-ALPHA**Application :** WB, IHC-P, ICC/IF, FC**Reactivity :** Human,Mouse,Rat**Host species :** Rabbit**Background**

This gene encodes a member of the CHD family of proteins which are characterized by the presence of chromo (chromatin organization modifier) domains and SNF2-related helicase/ATPase domains. This protein is one of the components of a histone deacetylase complex referred to as the Mi-2/NuRD complex which participates in the remodeling of chromatin by deacetylating histones. Chromatin remodeling is essential for many processes including transcription. Autoantibodies against this protein are found in a subset of patients with dermatomyositis. Three alternatively spliced transcripts encoding different isoforms have been described. [provided by RefSeq, Jul 2008]

**Immunogen**

A synthetic peptide of human CHD3

**Gene ID**

1107

**Swiss Prot**

Q12873

**Synonyms**

ZFH; Mi-2a; Mi2-ALPHA

**Reactivity**

Human,Mouse,Rat

**Application**

WB, IHC-P, ICC/IF, FC

**Recommended dilution**

WB: 1:1000-1:5000

IHC-P: 1:100-1:200

ICC/IF: 1:100-1:200

FC: 1:50-1:100

**Calculated MW**

227 kDa

**Observed MW**

260 kDa

**Host species**

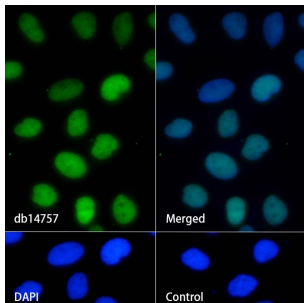
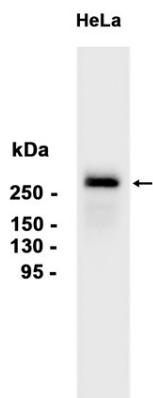
Rabbit

**Clonality**

Monoclonal

|                   |   |
|-------------------|---|
| Clonality No.     | DGR16989  |
| Isotype           | IgG   |
| Purity            | Affinity Purification   |
| Conjugation       | Un-conjugated   |
| Storage Stability | Store at -20°C. Supplied in 50mM Tris-Glycine(pH 7.4), 0.15M NaCl, 40% Glycerol, 0.01% sodium azide and 0.05% BSA. Stable for 12 months from date of receipt. |

Western blot analysis of extracts from HeLa cells using db14757 at 1:1000.



Immunofluorescence analysis of HeLa cells labelling CHD3 with db14757.

The cells were fixed with 4% PFA (10min, RT) followed by treatment with 0.1% Triton X-100 (10min, RT), and blocked in 1% BSA/10% normal goat serum/0.3M glycine in 0.1% PBS-Tween 20 for 1h. The cells were then incubate with db14757 (1:100) at room temprature for 1h, followed by a further incubation at room temperature for 45min with Goat Anti Rabbit IgG (H+L)-AF488 (db10005, shown in green). Nuclear DNA was labeled in blue with DAPI.

Control: Secondary antibody only.