

Recombinant

DGRmAb®

**Angiotensinogen (DGR16785) Rabbit mAb**

db14800

Package : 10µL 20µL 50µL 100µL

**Product Name** : Angiotensinogen (DGR16785) Rabbit mAb**Cat.No.:** db14800**Synonyms** : AGT;ANHU; hFLT1; SERPINA8**Application** : WB, IP**Reactivity** : Human,Mouse,Rat**Host species** : Rabbit**Background**

The protein encoded by this gene, pre-angiotensinogen or angiotensinogen precursor, is expressed in the liver and is cleaved by the enzyme renin in response to lowered blood pressure. The resulting product, angiotensin I, is then cleaved by angiotensin converting enzyme (ACE) to generate the physiologically active enzyme angiotensin II. The protein is involved in maintaining blood pressure and in the pathogenesis of essential hypertension and preeclampsia. Mutations in this gene are associated with susceptibility to essential hypertension, and can cause renal tubular dysgenesis, a severe disorder of renal tubular development. Defects in this gene have also been associated with non-familial structural atrial fibrillation, and inflammatory bowel disease. [provided by RefSeq, Jul 2008]

**Immunogen**

A synthetic peptide of mouse Angiotensinogen

**Gene ID**

183

**Swiss Prot**

P01019

**Synonyms**

AGT;ANHU; hFLT1; SERPINA8

**Reactivity**

Human,Mouse,Rat

**Application**

WB, IP

**Recommended dilution**WB: 1:1000  
IP: 1:20-1:50**Calculated MW**

52 kDa

**Observed MW**

52 kDa

**Host species**

Rabbit

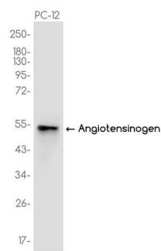
**Clonality**

Monoclonal

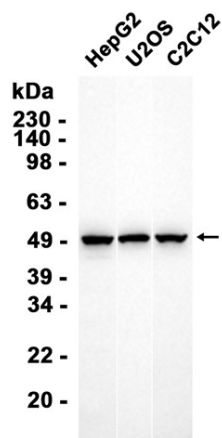
**Clonality No.**

DGR16785

Isotype	IgG
Purity	Affinity Purification
Conjugation	Un-conjugated
Storage Stability	Store at -20°C. Supplied in 50mM Tris-Glycine(pH 7.4), 0.15M NaCl, 40% Glycerol, 0.01% sodium azide and 0.05% BSA. Stable for 12 months from date of receipt.



Western blot analysis of extracts from PC-12 cells using db14800 at 1:1000.



Western blot analysis of extracts from HepG2,U2OS,C2C12 cells using db14800 at 1:1000.