

Recombinant

DGRmAb®

**BACE1 (DGR16768) Rabbit mAb**

db14803

Package : 10μL 20μL 50μL 100μL

**Product Name** : BACE1 (DGR16768) Rabbit mAb**Cat.No.:** db14803**Synonyms** : ASP2; BACE; HSPC104**Application** : WB, IP**Reactivity** : Human,Mouse,Rat**Host species** : Rabbit**Background**

This gene encodes a member of the peptidase A1 family of aspartic proteases. Alternative splicing results in multiple transcript variants, at least one of which encodes a preproprotein that is proteolytically processed to generate the mature protease. This transmembrane protease catalyzes the first step in the formation of amyloid beta peptide from amyloid precursor protein. Amyloid beta peptides are the main constituent of amyloid beta plaques, which accumulate in the brains of human Alzheimer's disease patients. [provided by RefSeq, Nov 2015]

**Immunogen**

A synthetic peptide of human BACE1

**Gene ID**

23621

**Swiss Prot**

P56817

**Synonyms**

ASP2; BACE; HSPC104

**Reactivity**

Human,Mouse,Rat

**Application**

WB, IP

**Recommended dilution**

WB: 1:1000-1:5000

IP: 1:10-1:100

**Calculated MW**

56 kDa

**Observed MW**

70 kDa

**Host species**

Rabbit

**Clonality**

Monoclonal

**Clonality No.**

DGR16768

**Isotype**

IgG

**Purity**

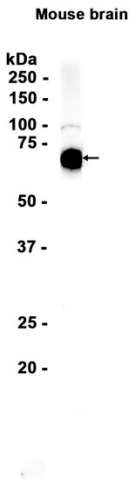
Affinity Purification

Conjugation

Un-conjugated

Storage Stability

Store at -20°C. Supplied in 50mM Tris-Glycine(pH 7.4), 0.15M NaCl, 40% Glycerol, 0.01% sodium azide and 0.05% BSA. Stable for 12 months from date of receipt.



Western blot analysis of extracts from Mouse brain tissue using db14803 at 1:1000.