

Recombinant

DGRmAb®

**Tmem27 (DGR16749) Rabbit mAb**

db14809

Package : 10µL 20µL 50µL 100µL

**Product Name** : Tmem27 (DGR16749) Rabbit mAb**Cat.No.:** db14809**Synonyms** : NX17; NX-17**Application** : WB, IHC-P, ICC/IF, FC**Reactivity** : Human,Mouse,Rat**Host species** : Rabbit**Background**

This gene encodes a type 1 transmembrane protein that is important for trafficking amino acid transporters to the apical brush border of proximal tubules. The encoded protein binds to amino acid transporters and regulates their expression on the plasma membrane. It also plays a role in controlling insulin exocytosis by regulating formation of the SNARE (soluble N-ethylmaleimide-sensitive-factor attachment protein receptor) complex in pancreatic beta cells. The extracellular domain of the encoded protein may be cleaved and shed from the plasma membrane specifically in pancreatic beta cells. [provided by RefSeq, Jun 2013]

**Immunogen**

A synthetic peptide of human Tmem27

**Gene ID**

57393

**Swiss Prot**

Q9HBJ8

**Synonyms**

NX17; NX-17

**Reactivity**

Human,Mouse,Rat

**Application**

WB, IHC-P, ICC/IF, FC

**Recommended dilution**WB: 1:1000  
IHC-P: 1:1000-1:10000  
ICC/IF: 1:200-1:500  
FC: 1:100**Calculated MW**

25 kDa

**Observed MW**

43 kDa

**Host species**

Rabbit

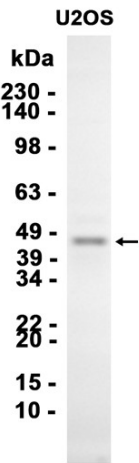
**Clonality**

Monoclonal

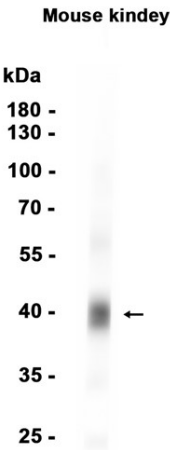
**Clonality No.**

DGR16749

Isotype	IgG
Purity	Affinity Purification
Conjugation	Un-conjugated
Storage Stability	Store at -20°C. Supplied in 50mM Tris-Glycine(pH 7.4), 0.15M NaCl, 40% Glycerol, 0.01% sodium azide and 0.05% BSA. Stable for 12 months from date of receipt.



Western blot analysis of extracts from U2OS cells using db14809 at 1:1000.



Western blot analysis of extracts from Mouse kidney tissue using db14809 at 1:1000.