

Recombinant

DGRmAb®

TLR7 (DGR16680) Rabbit mAb

db14823

Package : 10µL 20µL 50µL 100µL

Product Name : TLR7 (DGR16680) Rabbit mAb**Cat.No.:** db14823**Synonyms** : TLR7-like**Application** : WB, IHC-P**Reactivity** : Human**Host species** : Rabbit**Background**

The protein encoded by this gene is a member of the Toll-like receptor (TLR) family which plays a fundamental role in pathogen recognition and activation of innate immunity. TLRs are highly conserved from Drosophila to humans and share structural and functional similarities. They recognize pathogen-associated molecular patterns (PAMPs) that are expressed on infectious agents, and mediate the production of cytokines necessary for the development of effective immunity. The various TLRs exhibit different patterns of expression. This gene is predominantly expressed in lung, placenta, and spleen, and lies in close proximity to another family member, TLR8, on chromosome X. [provided by RefSeq, Jul 2008]

Immunogen

A synthetic peptide of human TLR7

Gene ID

51284

Swiss Prot

Q9NYK1

Synonyms

TLR7-like

Reactivity

Human

Application

WB, IHC-P

Recommended dilutionWB: 1:1000
IHC-P: 1:100**Calculated MW**

121 kDa

Observed MW

140 kDa

Host species

Rabbit

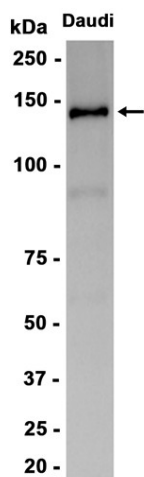
Clonality

Monoclonal

Clonality No.

DGR16680

Isotype	IgG
Purity	Affinity Purification
Conjugation	Un-conjugated
Storage Stability	Store at -20°C. Supplied in 50mM Tris-Glycine(pH 7.4), 0.15M NaCl, 40% Glycerol, 0.01% sodium azide and 0.05% BSA. Stable for 12 months from date of receipt.



Western blot analysis of extracts from Daudi cells using db14823 at 1:1000.