

Recombinant

DGRmAb®

**Proteasome 26S S10 (DGR16287) Rabbit mAb**

db14870

Package : 10µL 20µL 50µL 100µL

**Product Name** : Proteasome 26S S10 (DGR16287) Rabbit mAb**Cat.No.:** db14870**Synonyms** : p28; p28(GANK); dJ889N15.2**Application** : WB, IHC-P, ICC/IF, FC**Reactivity** : Human,Mouse,Rat**Host species** : Rabbit**Background**

This gene encodes a subunit of the PA700/19S complex, which is the regulatory component of the 26S proteasome. The 26S proteasome complex is required for ubiquitin-dependent protein degradation. This protein is a non-ATPase subunit that may be involved in protein-protein interactions. Aberrant expression of this gene may play a role in tumorigenesis. Two transcripts encoding different isoforms have been described. Pseudogenes have been identified on chromosomes 3 and 20.[provided by RefSeq, Mar 2011]

**Immunogen**

A synthetic peptide of human Proteasome 26S S10

**Gene ID**

5716

**Swiss Prot**

O75832

**Synonyms**

p28; p28(GANK); dJ889N15.2

**Reactivity**

Human,Mouse,Rat

**Application**

WB, IHC-P, ICC/IF, FC

**Recommended dilution**

WB: 1:1000-1:5000

IHC-P: 1:50-1:100

ICC/IF: 1:100

FC: 1:50-1:100

**Calculated MW**

24 kDa

**Observed MW**

24 kDa

**Host species**

Rabbit

**Clonality**

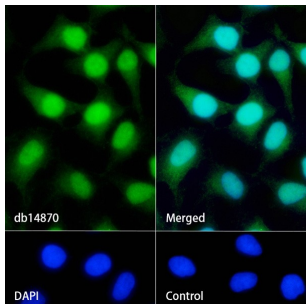
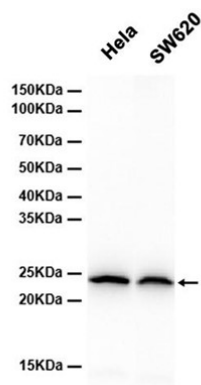
Monoclonal

**Clonality No.**

DGR16287

Isotype	IgG
Purity	Affinity Purification
Conjugation	Un-conjugated
Storage Stability	Store at -20°C. Supplied in 50mM Tris-Glycine(pH 7.4), 0.15M NaCl, 40% Glycerol, 0.01% sodium azide and 0.05% BSA. Stable for 12 months from date of receipt.

Western blot analysis of extracts from HeLa,SW620 cells using db14870 at 1:4000.



Immunofluorescence analysis of HeLa cells labelling Proteasome 26S S10 with db14870.

The cells were fixed with 4% PFA (10min, RT) followed by treatment with 0.1% Triton X-100 (10min, RT), and blocked in 1% BSA/10% normal goat serum/0.3M glycine in 0.1% PBS-Tween 20 for 1h. The cells were then incubate with db14870 (1:100) at room temprature for 1h, followed by a further incubation at room temperature for 45min with Goat Anti Rabbit IgG (H+L)-AF488 (db10005, shown in green). Nuclear DNA was labeled in blue with DAPI.

Control: Secondary antibody only.