

Recombinant

DGRmAb®

## Natriuretic peptides A (DGR16165) Rabbit mAb

db14891

Package : 10µL 20µL 50µL 100µL

**Product Name** : Natriuretic peptides A (DGR16165) Rabbit mAb**Cat.No.:** db14891**Synonyms** : ANP; Anf; Pnd**Application** : WB, IHC-P, IP**Reactivity** : Mouse,Rat**Host species** : Rabbit**Background**

This gene encodes members of the natriuretic family of peptides that play an important role in the control of extracellular fluid volume and electrolyte homeostasis. The encoded protein precursor undergoes proteolytic processing to generate multiple functional peptides. Mice lacking the encoded peptides exhibit salt-sensitive hypertension. The transgenic overexpression of the encoded peptides in mice decreases arterial blood pressure without inducing diuresis and natriuresis. This gene is located adjacent to another member of the natriuretic family of peptides on chromosome 4. [provided by RefSeq, Oct 2015]

**Immunogen**

A synthetic peptide of mouse Natriuretic peptides A

**Gene ID**

230899

**Swiss Prot**

P05125

**Synonyms**

ANP; Anf; Pnd

**Reactivity**

Mouse,Rat

**Application**

WB, IHC-P, IP

**Recommended dilution**WB: 1:1000  
IHC-P: 1:200-1:2000  
IP: 1:20-1:50**Calculated MW**

17 kDa

**Observed MW**

17 kDa

**Host species**

Rabbit

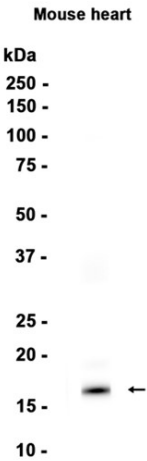
**Clonality**

Monoclonal

**Clonality No.**

DGR16165

Isotype	IgG
Purity	Affinity Purification
Conjugation	Un-conjugated
Storage Stability	Store at -20°C. Supplied in 50mM Tris-Glycine(pH 7.4), 0.15M NaCl, 40% Glycerol, 0.01% sodium azide and 0.05% BSA. Stable for 12 months from date of receipt.



Western blot analysis of extracts from Mouse heart tissue using db14891 at 1:1000.