

Recombinant

DGRmAb®

Syntenin (DGR15736) Rabbit mAb

db15001

Package : 10µL 20µL 50µL 100µL

Product Name : Syntenin (DGR15736) Rabbit mAb**Cat.No.:** db15001**Synonyms** : ST1; MDA9; SYCL; MDA-9; TACIP18**Application** : WB, IHC-P, ICC/IF, FC, IP**Reactivity** : Human**Host species** : Rabbit**Background**

The protein encoded by this gene was initially identified as a molecule linking syndecan-mediated signaling to the cytoskeleton. The syntenin protein contains tandemly repeated PDZ domains that bind the cytoplasmic, C-terminal domains of a variety of transmembrane proteins. This protein may also affect cytoskeletal-membrane organization, cell adhesion, protein trafficking, and the activation of transcription factors. The protein is primarily localized to membrane-associated adherens junctions and focal adhesions but is also found at the endoplasmic reticulum and nucleus. Alternative splicing results in multiple transcript variants encoding different isoforms. Related pseudogenes have been identified on multiple chromosomes. [provided by RefSeq, Jan 2017]

Immunogen

A synthetic peptide of human Syntenin

Gene ID

6386

Swiss Prot

O00560

Synonyms

ST1; MDA9; SYCL; MDA-9; TACIP18

Reactivity

Human

Application

WB, IHC-P, ICC/IF, FC, IP

Recommended dilution

WB: 1:1000-1:5000

IHC-P: 1:50-1:100

ICC/IF: 1:50-1:200

FC: 1:20-1:50

IP: 1:10-1:100

Calculated MW

32 kDa

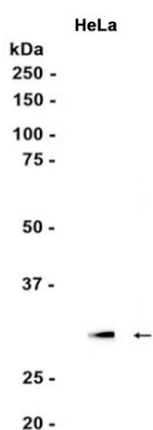
Observed MW

32 kDa

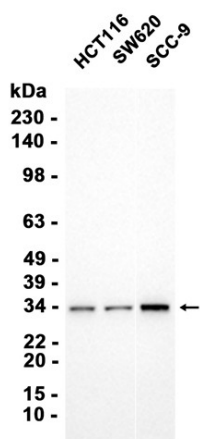
Host species

Rabbit

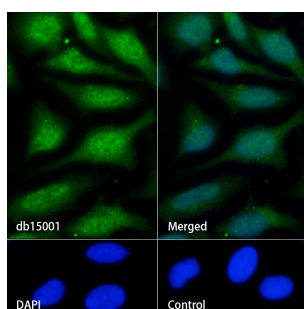
Clonality	Monoclonal
Clonality No.	DGR15736
Isotype	IgG
Purity	Affinity Purification
Conjugation	Un-conjugated
Storage Stability	Store at -20°C. Supplied in 50mM Tris-Glycine(pH 7.4), 0.15M NaCl, 40% Glycerol, 0.01% sodium azide and 0.05% BSA. Stable for 12 months from date of receipt.



Western blot analysis of extracts from HeLa cells using db15001 at 1:1000.



Western blot analysis of extracts from HCT116, SW620, SCC-9 cells using db15001 at 1:3000.



Immunofluorescence analysis of HeLa cells labelling Syntenin with db15001.

The cells were fixed with cold 100% methanol (10min, 4°C) and blocked in 1% BSA/10% normal goat serum/0.3M glycine in 0.1% PBS-Tween 20 for 1h. The cells were then incubate with db15001 (1:50) at room temprature for 1h, followed by a further incubation at room temperature for 45min with Goat Anti Rabbit IgG (H+L)-AF488 (db10005, shown in green). Nuclear DNA was labeled in blue with DAPI.

Control: Secondary antibody only.