

Recombinant

DGRmAb®

## alpha Lactalbumin (DGR15179) Rabbit mAb

db15120

Package : 10µL 20µL 50µL 100µL

**Product Name** : alpha Lactalbumin (DGR15179) Rabbit mAb**Cat.No.:** db15120**Synonyms** : LYZG**Application** : WB**Reactivity** : Human**Host species** : Rabbit**Background**

This gene encodes alpha-lactalbumin, a principal protein of milk. Alpha-lactalbumin forms the regulatory subunit of the lactose synthase (LS) heterodimer and beta 1,4-galactosyltransferase (beta4Gal-T1) forms the catalytic component. Together, these proteins enable LS to produce lactose by transferring galactose moieties to glucose. As a monomer, alpha-lactalbumin strongly binds calcium and zinc ions and may possess bactericidal or antitumor activity. A folding variant of alpha-lactalbumin, called HAMLET, likely induces apoptosis in tumor and immature cells. [provided by RefSeq, Jul 2008]

**Immunogen**

A synthetic peptide of human alpha Lactalbumin

**Gene ID**

3906

**Swiss Prot**

P00709

**Synonyms**

LYZG

**Reactivity**

Human

**Application**

WB

**Recommended dilution**

WB: 1:1000-1:5000

**Calculated MW**

16 kDa

**Observed MW**

14 kDa

**Host species**

Rabbit

**Clonality**

Monoclonal

**Clonality No.**

DGR15179

**Isotype**

IgG

**Purity**

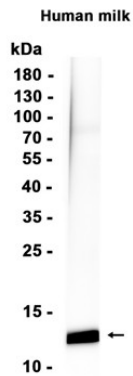
Affinity Purification

**Conjugation**

Un-conjugated

**Storage Stability**

Store at -20°C. Supplied in 50mM Tris-Glycine(pH 7.4), 0.15M NaCl, 40% Glycerol, 0.01% sodium azide and 0.05% BSA. Stable for 12 months from date of receipt.



Western blot analysis of extracts Human milk tissue using db15120 at 1:1000.