

Recombinant

DGRmAb®

BCRP/ABCG2 (DGR15077) Rabbit mAb

db15150

Package : 10µL 20µL 50µL 100µL

Product Name : BCRP/ABCG2 (DGR15077) Rabbit mAb**Cat.No.:** db15150**Synonyms** : MRX; MXR; ABCP; BCRP; BMDP; MXR1; ABC15; BCRP1; CD338; GOUT1; MXR-1; CDw338; UAQTL1; EST157481**Application** : WB, IHC-P, FC**Reactivity** : Human,Mouse,Rat**Host species** : Rabbit**Background**

The membrane-associated protein encoded by this gene is included in the superfamily of ATP-binding cassette (ABC) transporters. ABC proteins transport various molecules across extra- and intra-cellular membranes. ABC genes are divided into seven distinct subfamilies (ABC1, MDR/TAP, MRP, ALD, OABP, GCN20, White). This protein is a member of the White subfamily. Alternatively referred to as a breast cancer resistance protein, this protein functions as a xenobiotic transporter which may play a major role in multi-drug resistance. It likely serves as a cellular defense mechanism in response to mitoxantrone and anthracycline exposure. Significant expression of this protein has been observed in the placenta, which may suggest a potential role for this molecule in placenta tissue. Multiple transcript variants encoding different isoforms have been found for this gene. [provided by RefSeq, Apr 2012]

Immunogen

Recombinant protein of human BCRP/ABCG2

Gene ID

9429

Swiss Prot

Q9UNQ0

Synonyms

MRX; MXR; ABCP; BCRP; BMDP; MXR1; ABC15; BCRP1; CD338; GOUT1; MXR-1; CDw338; UAQTL1; EST157481

Reactivity

Human,Mouse,Rat

Application

WB, IHC-P, FC

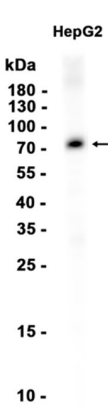
Recommended dilutionWB: 1:1000
IHC-P: 1:500-1:2000
FC: 1:100**Calculated MW**

72 kDa

Observed MW

72 kDa

Host species	Rabbit
Clonality	Monoclonal
Clonality No.	DGR15077
Isotype	IgG
Purity	Affinity Purification
Conjugation	Un-conjugated
Storage Stability	Store at -20°C. Supplied in 50mM Tris-Glycine(pH 7.4), 0.15M NaCl, 40% Glycerol, 0.01% sodium azide and 0.05% BSA. Stable for 12 months from date of receipt.



Western blot analysis of extracts from HepG2 cells using db15150 at 1:1000.