

Recombinant

DGRmAb®

## Nephrin (DGR15066) Rabbit mAb

db15156

Package : 10µL 20µL 50µL 100µL

**Product Name** : Nephrin (DGR15066) Rabbit mAb**Cat.No.:** db15156**Synonyms** : CNF; NPHN; nephrin**Application** : WB, IHC-P, IP**Reactivity** : Human,Mouse,Rat**Host species** : Rabbit**Background**

This gene encodes a member of the immunoglobulin family of cell adhesion molecules that functions in the glomerular filtration barrier in the kidney. The gene is primarily expressed in renal tissues, and the protein is a type-1 transmembrane protein found at the slit diaphragm of glomerular podocytes. The slit diaphragm is thought to function as an ultrafilter to exclude albumin and other plasma macromolecules in the formation of urine. Mutations in this gene result in Finnish-type congenital nephrosis 1, characterized by severe proteinuria and loss of the slit diaphragm and foot processes.[provided by RefSeq, Oct 2009]

**Immunogen**

A synthetic peptide of human Nephrin

**Gene ID**

4868

**Swiss Prot**

O60500

**Synonyms**

CNF; NPHN; nephrin

**Reactivity**

Human,Mouse,Rat

**Application**

WB, IHC-P, IP

**Recommended dilution**WB: 1:1000  
IHC-P: 1:200-1:1000  
IP: 1:20-1:50**Calculated MW**

135 kDa

**Observed MW**

200 kDa

**Host species**

Rabbit

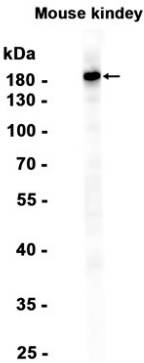
**Clonality**

Monoclonal

**Clonality No.**

DGR15066

Isotype	IgG
Purity	Affinity Purification
Conjugation	Un-conjugated
Storage Stability	Store at -20°C. Supplied in 50mM Tris-Glycine(pH 7.4), 0.15M NaCl, 40% Glycerol, 0.01% sodium azide and 0.05% BSA. Stable for 12 months from date of receipt.



Western blot analysis of extracts from Mouse kidney tissue using db15156 at 1:1000.