

Recombinant

DGRmAb®

**Ephrin A1 (DGR14997) Rabbit mAb**

db15168

Package : 10µL 20µL 50µL 100µL

**Product Name** : Ephrin A1 (DGR14997) Rabbit mAb**Cat.No.:** db15168**Synonyms** : B61; EFL1; ECKLG; EPLG1; LERK1; LERK-1; TNFAIP4**Application** : WB**Reactivity** : Human**Host species** : Rabbit**Background**

This gene encodes a member of the ephrin (EPH) family. The ephrins and EPH-related receptors comprise the largest subfamily of receptor protein-tyrosine kinases and have been implicated in mediating developmental events, especially in the nervous system and in erythropoiesis. Based on their structures and sequence relationships, ephrins are divided into the ephrin-A (EFNA) class, which are anchored to the membrane by a glycosylphosphatidylinositol linkage, and the ephrin-B (EFNB) class, which are transmembrane proteins. This gene encodes an EFNA class ephrin which binds to the EPHA2, EPHA4, EPHA5, EPHA6, and EPHA7 receptors. Two transcript variants that encode different isoforms were identified through sequence analysis. [provided by RefSeq, Jul 2008]

**Immunogen**

A synthetic peptide of human Ephrin A1

**Gene ID**

1942

**Swiss Prot**

P20827

**Synonyms**

B61; EFL1; ECKLG; EPLG1; LERK1; LERK-1; TNFAIP4

**Reactivity**

Human

**Application**

WB

**Recommended dilution**

WB: 1:1000-1:5000

**Calculated MW**

24 kDa

**Observed MW**

24 kDa

**Host species**

Rabbit

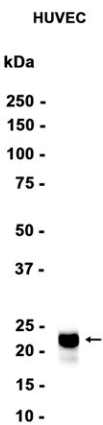
**Clonality**

Monoclonal

**Clonality No.**

DGR14997

Isotype	IgG
Purity	Affinity Purification
Conjugation	Un-conjugated
Storage Stability	Store at -20°C. Supplied in 50mM Tris-Glycine(pH 7.4), 0.15M NaCl, 40% Glycerol, 0.01% sodium azide and 0.05% BSA. Stable for 12 months from date of receipt.



Western blot analysis of extracts from HUVEC cells using db15168 at 1:1000.