

Recombinant

DGRmAb®

GPR 139 (DGR14988) Rabbit mAb

db15173

Package : 10µL 20µL 50µL 100µL

Product Name : GPR 139 (DGR14988) Rabbit mAb**Cat.No.:** db15173**Synonyms :** PGR3; GPRg1**Application :** WB**Reactivity :** Human,Mouse,Rat**Host species :** Rabbit**Background**

This gene encodes a member of the rhodopsin family of G-protein-coupled receptors. The encoded protein is almost exclusively expressed in the central nervous system. L-tryptophan and L-phenylalanine may act as the physiologic ligands of the encoded protein. Alternative splicing results in multiple transcript variants. [provided by RefSeq, Jan 2016]

Immunogen

A synthetic peptide of human GPR 139

Gene ID

124274

Swiss Prot

Q6DWJ6

Synonyms

PGR3; GPRg1

Reactivity

Human,Mouse,Rat

Application

WB

Recommended dilution

WB: 1:1000-1:5000

Calculated MW

41 kDa

Observed MW

45-50 kDa

Host species

Rabbit

Clonality

Monoclonal

Clonality No.

DGR14988

Isotype

IgG

Purity

Affinity Purification

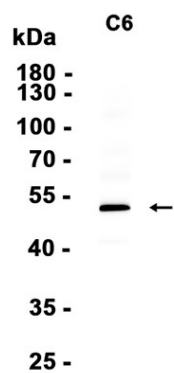
Conjugation

Un-conjugated

Storage Stability

Store at -20°C. Supplied in 50mM Tris-Glycine(pH 7.4), 0.15M NaCl, 40% Glycerol, 0.01% sodium

azide and 0.05% BSA. Stable for 12 months from date of receipt.



Western blot analysis of extracts from C6 cells using db15173 at 1:1000.