

Recombinant

DGRmAb®

GOSR1 (DGR14447) Rabbit mAb

db15299

Package : 10µL 20µL 50µL 100µL

Product Name : GOSR1 (DGR14447) Rabbit mAb**Cat.No.:** db15299**Synonyms :** P28; GS28; GOS28; GOLIM2; GOS-28; GOS28/P28**Application :** WB, IHC-P, ICC/IF, FC**Reactivity :** Human,Mouse,Rat**Host species :** Rabbit**Background**

This gene encodes a trafficking membrane protein which transports proteins among the endoplasmic reticulum and the Golgi and between Golgi compartments. This protein is considered an essential component of the Golgi SNAP receptor (SNARE) complex. Alternatively spliced transcript variants encoding distinct isoforms have been found for this gene. [provided by RefSeq, Jul 2008]

Immunogen

A synthetic peptide of human GOSR1

Gene ID

9527

Swiss Prot

O95249

Synonyms

P28; GS28; GOS28; GOLIM2; GOS-28; GOS28/P28

Reactivity

Human,Mouse,Rat

Application

WB, IHC-P, ICC/IF, FC

Recommended dilution

WB: 1:1000
IHC-P: 1:100
ICC/IF: 1:100
FC: 1:100

Calculated MW

29 kDa

Observed MW

28 kDa

Host species

Rabbit

Clonality

Monoclonal

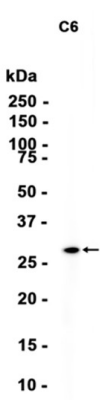
Clonality No.

DGR14447

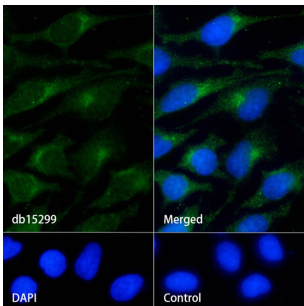
Isotype

IgG

Purity	Affinity Purification
Conjugation	Un-conjugated
Storage Stability	Store at -20°C. Supplied in 50mM Tris-Glycine(pH 7.4), 0.15M NaCl, 40% Glycerol, 0.01% sodium azide and 0.05% BSA. Stable for 12 months from date of receipt.



Western blot analysis of extracts from C6 cells using db15299 at 1:1000.



Immunofluorescence analysis of HeLa cells labelling GOSR1 with db15299.

The cells were fixed with cold 100% methanol (10min, 4℃) and blocked in 1% BSA/10% normal goat serum/0.3M glycine in 0.1% PBS-Tween 20 for 1h. The cells were then incubate with db15299 (1:100) at room temprature for 1h, followed by a further incubation at room temperature for 45min with Goat Anti Rabbit IgG (H+L)-AF488 (db10005, shown in green). Nuclear DNA was labeled in blue with DAPI.

Control: Secondary antibody only.