

Recombinant

DGRmAb®

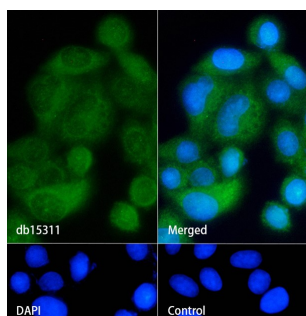
## alpha 1 Fetoprotein (DGR14411) Rabbit mAb

db15311

Package : 10µL 20µL 50µL 100µL

**Product Name** : alpha 1 Fetoprotein (DGR14411) Rabbit mAb**Cat.No.:** db15311**Synonyms** : Afp**Application** : WB, ICC/IF, FC**Reactivity** : Mouse,Rat**Host species** : Rabbit

<b>Background</b>	Binds estrogens, fatty acids and metals.
<b>Immunogen</b>	Recombinant protein of mouse alpha 1 Fetoprotein
<b>Gene ID</b>	11576
<b>Swiss Prot</b>	P02772
<b>Synonyms</b>	Afp
<b>Reactivity</b>	Mouse,Rat
<b>Application</b>	WB, ICC/IF, FC
<b>Recommended dilution</b>	WB: 1:1000 ICC/IF: 1:100 FC: 1:200-1:500
<b>Calculated MW</b>	67 kDa
<b>Observed MW</b>	70 kDa
<b>Host species</b>	Rabbit
<b>Clonality</b>	Monoclonal
<b>Clonality No.</b>	DGR14411
<b>Isotype</b>	IgG
<b>Purity</b>	Affinity Purification
<b>Conjugation</b>	Un-conjugated
<b>Storage Stability</b>	Store at -20°C. Supplied in 50mM Tris-Glycine(pH 7.4), 0.15M NaCl, 40% Glycerol, 0.01% sodium azide and 0.05% BSA. Stable for 12 months from date of receipt.



Immunofluorescence analysis of HepG2 cells labelling alpha 1 Fetoprotein with db15311.

The cells were fixed with cold 100% methanol (10min, 4°C) and blocked in 1% BSA/10% normal goat serum/0.3M glycine in 0.1% PBS-Tween 20 for 1h. The cells were then incubate with db15311 (1:100) at room temprature for 1h, followed by a further incubation at room temperature for 45min with Goat Anti Rabbit IgG (H+L)-AF488 (db10005, shown in green). Nuclear DNA was labeled in blue with DAPI.

Control: Secondary antibody only.