

Recombinant

DGRmAb®

## ANP (DGR14408) Rabbit mAb

db15312

Package : 10µL 20µL 50µL 100µL

**Product Name** : ANP (DGR14408) Rabbit mAb**Cat.No.:** db15312**Synonyms** : ANF; ANP; CDD; CDP; PND; ATFB6; ATRST2; CDD-ANF**Application** : WB, IHC-P, IP**Reactivity** : Human,Rat**Host species** : Rabbit**Background**

The protein encoded by this gene belongs to the natriuretic peptide family. Natriuretic peptides are implicated in the control of extracellular fluid volume and electrolyte homeostasis. This protein is synthesized as a large precursor (containing a signal peptide), which is processed to release a peptide from the N-terminus with similarity to vasoactive peptide, cardiodilatin, and another peptide from the C-terminus with natriuretic-diuretic activity. Mutations in this gene have been associated with atrial fibrillation familial type 6. This gene is located adjacent to another member of the natriuretic family of peptides on chromosome 1. [provided by RefSeq, Oct 2015]

**Immunogen**

Recombinant protein of human ANP

**Gene ID**

4878

**Swiss Prot**

P01160

**Synonyms**

ANF; ANP; CDD; CDP; PND; ATFB6; ATRST2; CDD-ANF

**Reactivity**

Human,Rat

**Application**

WB, IHC-P, IP

**Recommended dilution**WB: 1:1000  
IHC-P: 1:500-1:2000  
IP: 1:20-1:50**Calculated MW**

17 kDa

**Observed MW**

17 kDa

**Host species**

Rabbit

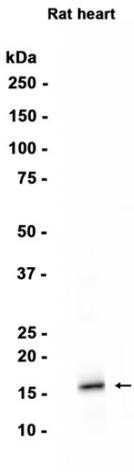
**Clonality**

Monoclonal

**Clonality No.**

DGR14408

Isotype	IgG
Purity	Affinity Purification
Conjugation	Un-conjugated
Storage Stability	Store at -20°C. Supplied in 50mM Tris-Glycine(pH 7.4), 0.15M NaCl, 40% Glycerol, 0.01% sodium azide and 0.05% BSA. Stable for 12 months from date of receipt.



Western blot analysis of extracts from Rat heart tissue using db15312 at 1:1000.