

Recombinant

DGRmAb®

SIRT1 (DGR13955) Rabbit mAb

db15473

Package : 10µL 20µL 50µL 100µL

Product Name : SIRT1 (DGR13955) Rabbit mAb**Cat.No.:** db15473**Synonyms** : SIR2; SIR2L1; SIR2alpha**Application** : WB, IHC-P, ICC/IF, FC, IP**Reactivity** : Human**Host species** : Rabbit**Background**

This gene encodes a member of the sirtuin family of proteins, homologs to the yeast Sir2 protein. Members of the sirtuin family are characterized by a sirtuin core domain and grouped into four classes. The functions of human sirtuins have not yet been determined; however, yeast sirtuin proteins are known to regulate epigenetic gene silencing and suppress recombination of rDNA. Studies suggest that the human sirtuins may function as intracellular regulatory proteins with mono-ADP-ribosyltransferase activity. The protein encoded by this gene is included in class I of the sirtuin family. Alternative splicing results in multiple transcript variants. [provided by RefSeq, Dec 2008]

Immunogen

A synthetic peptide of human SIRT1

Gene ID

23411

Swiss Prot

Q96EB6

Synonyms

SIR2; SIR2L1; SIR2alpha

Reactivity

Human

Application

WB, IHC-P, ICC/IF, FC, IP

Recommended dilution

WB: 1:2000-1:20000

IHC-P: 1:100-1:200

ICC/IF: 1:100

FC: 1:100-1:200

IP: 1:20-1:50

Calculated MW

82 kDa

Observed MW

120 kDa

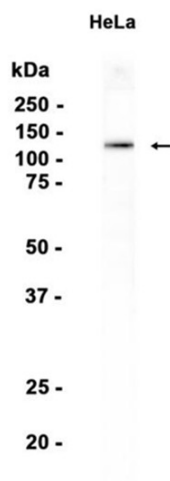
Host species

Rabbit

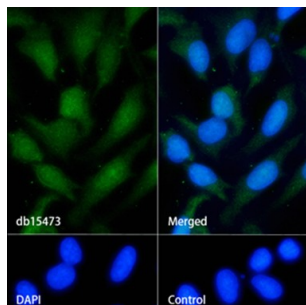
Clonality

Monoclonal

Clonality No.	DGR13955
Isotype	IgG
Purity	Affinity Purification
Conjugation	Un-conjugated
Storage Stability	Store at -20°C. Supplied in 50mM Tris-Glycine(pH 7.4), 0.15M NaCl, 40% Glycerol, 0.01% sodium azide and 0.05% BSA. Stable for 12 months from date of receipt.



Western blot analysis of extracts from HeLa cells using db15473 at 1:1000.



Immunofluorescence analysis of HeLa cells labelling SIRT1 with db15473.

The cells were fixed with cold 100% methanol (10min, 4°C) and blocked in 1% BSA/10% normal goat serum/0.3M glycine in 0.1% PBS-Tween 20 for 1h. The cells were then incubate with db15473 (1:200) at room temprature for 1h, followed by a further incubation at room temperature for 45min with Goat Anti Rabbit IgG (H+L)-AF488 (db10005, shown in green). Nuclear DNA was labeled in blue with DAPI.

Control: Secondary antibody only.