

Recombinant

DGRmAb®

Calreticulin (DGR13791) Rabbit mAb

db15496

Package : 10µL 20µL 50µL 100µL

Product Name : Calreticulin (DGR13791) Rabbit mAb**Cat.No.:** db15496**Synonyms** : RO; CRT; SSA; cC1qR; HEL-S-99n**Application** : WB, IHC-P, ICC/IF, FC**Reactivity** : Human,Mouse,Rat**Host species** : Rabbit**Background**

Calreticulin is a multifunctional protein that acts as a major Ca(2+)-binding (storage) protein in the lumen of the endoplasmic reticulum. It is also found in the nucleus, suggesting that it may have a role in transcription regulation. Calreticulin binds to the synthetic peptide KLGFFKR, which is almost identical to an amino acid sequence in the DNA-binding domain of the superfamily of nuclear receptors. Calreticulin binds to antibodies in certain sera of systemic lupus and Sjogren patients which contain anti-Ro/SSA antibodies, it is highly conserved among species, and it is located in the endoplasmic and sarcoplasmic reticulum where it may bind calcium. The amino terminus of calreticulin interacts with the DNA-binding domain of the glucocorticoid receptor and prevents the receptor from binding to its specific glucocorticoid response element. Calreticulin can inhibit the binding of androgen receptor to its hormone-responsive DNA element and can inhibit androgen receptor and retinoic acid receptor transcriptional activities in vivo, as well as retinoic acid-induced neuronal differentiation. Thus, calreticulin can act as an important modulator of the regulation of gene transcription by nuclear hormone receptors. Systemic lupus erythematosus is associated with increased autoantibody titers against calreticulin but calreticulin is not a Ro/SS-A antigen. Earlier papers referred to calreticulin as an Ro/SS-A antigen but this was later disproven. Increased autoantibody titer against human calreticulin is found in infants with complete congenital heart block of both the IgG and IgM classes. [provided by RefSeq, Jul 2008]

Immunogen

A synthetic peptide of human Calreticulin

Gene ID

811

Swiss Prot

P27797

Synonyms

RO; CRT; SSA; cC1qR; HEL-S-99n

Reactivity

Human,Mouse,Rat

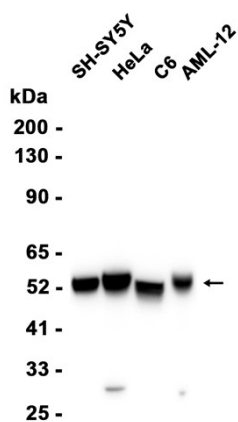
Application

WB, IHC-P, ICC/IF, FC

Recommended dilution

WB: 1:1000-1:5000

	IHC-P: 1:200-1:500
	ICC/IF: 1:200-1:500
	FC: 1:10-1:100
Calculated MW	48 kDa
Observed MW	55 kDa
Host species	Rabbit
Clonality	Monoclonal
Clonality No.	DGR13791
Isotype	IgG
Purity	Affinity Purification
Conjugation	Un-conjugated
Storage Stability	Store at -20°C. Supplied in 50mM Tris-Glycine(pH 7.4), 0.15M NaCl, 40% Glycerol, 0.01% sodium azide and 0.05% BSA. Stable for 12 months from date of receipt.



Western blot analysis of extracts from SH-SY5Y, HeLa, C6, AML-12 cells using db15496 at 1:500.