

Recombinant

DGRmAb®

IRS1 (DGR13608) Rabbit mAb

db15530

Package : 10µL 20µL 50µL 100µL

Product Name : IRS1 (DGR13608) Rabbit mAb

Cat.No.: db15530

Synonyms : HIRS-1

Application : WB, IHC, ICC/IF, FC

Reactivity : Human

Host species : Rabbit

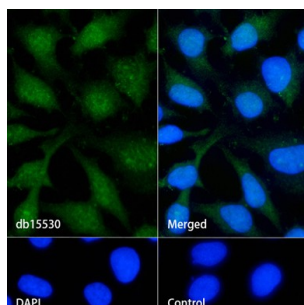
Background	This gene encodes a protein which is phosphorylated by insulin receptor tyrosine kinase. Mutations in this gene are associated with type II diabetes and susceptibility to insulin resistance. [provided by RefSeq, Nov 2009]
Immunogen	A synthetic peptide of human IRS1
Gene ID	3667
Swiss Prot	P35568
Synonyms	HIRS-1
Reactivity	Human
Application	WB, IHC, ICC/IF, FC
Recommended dilution	WB: 1:1000-1:5000 IHC: 1:20-1:50 ICC/IF: 1:50-1:200 FC: 1:20
Calculated MW	132 kDa
Observed MW	180 kDa
Host species	Rabbit
Clonality	Monoclonal
Clonality No.	DGR13608
Isotype	IgG
Purity	Affinity Purification

Conjugation

Un-conjugated

Storage Stability

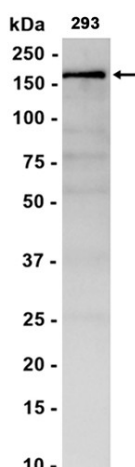
Store at -20°C. Supplied in 50mM Tris-Glycine(pH 7.4), 0.15M NaCl, 40% Glycerol, 0.01% sodium azide and 0.05% BSA. Stable for 12 months from date of receipt.



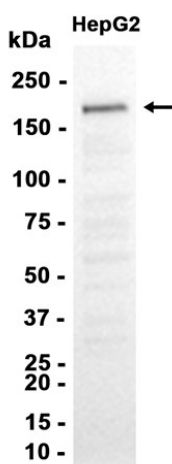
Immunofluorescence analysis of HeLa cells labelling IRS1 with db15530.

The cells were fixed with cold 100% methanol (10min, 4°C) and blocked in 1% BSA/10% normal goat serum/0.3M glycine in 0.1% PBS-Tween 20 for 1h. The cells were then incubate with db15530 (1:50) at room temprature for 1h, followed by a further incubation at room temperature for 45min with Goat Anti Rabbit IgG (H+L)-AF488 (db10005, shown in green). Nuclear DNA was labeled in blue with DAPI.

Control: Secondary antibody only.



Western blot analysis of extracts from 293 cells using db15530 at 1:1000.



Western blot analysis of extracts from HepG2 cells using db15530 at 1:2000.