

Recombinant

DGRmAb®

## GRB2 (DGR13467) Rabbit mAb

db15565

Package : 10µL 20µL 50µL 100µL

**Product Name :** GRB2 (DGR13467) Rabbit mAb**Cat.No.:** db15565**Synonyms :** ASH; Grb3-3; MST084; NCKAP2; MSTP084; EGFRBP-GRB2**Application :** WB, IHC, ICC/IF, FC**Reactivity :** Human, Mouse, Rat**Host species :** Rabbit**Background**

The protein encoded by this gene binds the epidermal growth factor receptor and contains one SH2 domain and two SH3 domains. Its two SH3 domains direct complex formation with proline-rich regions of other proteins, and its SH2 domain binds tyrosine phosphorylated sequences. This gene is similar to the Sem5 gene of *C.elegans*, which is involved in the signal transduction pathway. Two alternatively spliced transcript variants encoding different isoforms have been found for this gene. [provided by RefSeq, Jul 2008]

**Immunogen**

A synthetic peptide of human GRB2

**Gene ID**

2885

**Swiss Prot**

P62993

**Synonyms**

ASH; Grb3-3; MST084; NCKAP2; MSTP084; EGFRBP-GRB2

**Reactivity**

Human, Mouse, Rat

**Application**

WB, IHC, ICC/IF, FC

**Recommended dilution**

WB: 1:1000

IHC: 1:100

ICC/IF: 1:20-1:50

FC: 1:20

**Calculated MW**

25 kDa

**Observed MW**

25 kDa

**Host species**

Rabbit

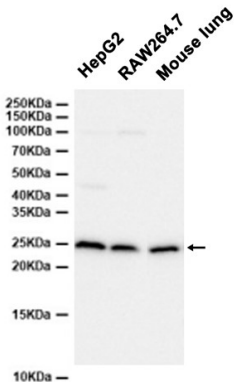
**Clonality**

Monoclonal

**Clonality No.**

DGR13467

Isotype	IgG
Purity	Affinity Purification
Conjugation	Un-conjugated
Storage Stability	Store at -20°C. Supplied in 50mM Tris-Glycine(pH 7.4), 0.15M NaCl, 40% Glycerol, 0.01% sodium azide and 0.05% BSA. Stable for 12 months from date of receipt.



Western blot analysis of extracts from HepG2 cells and RAW264.7 , Mouse lung tissue using db15565 at 1:1000.