

Recombinant

DGRmAb®

GRB2 (DGR13455) Rabbit mAb

db15571

Package : 10µL 20µL 50µL 100µL

Product Name : GRB2 (DGR13455) Rabbit mAb**Cat.No.:** db15571**Synonyms :** ASH; Grb3-3; MST084; NCKAP2; MSTP084; EGFRBP-GRB2**Application :** WB, IHC, ICC/IF, IP**Reactivity :** Human, Mouse, Rat**Host species :** Rabbit**Background**

The protein encoded by this gene binds the epidermal growth factor receptor and contains one SH2 domain and two SH3 domains. Its two SH3 domains direct complex formation with proline-rich regions of other proteins, and its SH2 domain binds tyrosine phosphorylated sequences. This gene is similar to the Sem5 gene of *C.elegans*, which is involved in the signal transduction pathway. Two alternatively spliced transcript variants encoding different isoforms have been found for this gene. [provided by RefSeq, Jul 2008]

Immunogen

A synthetic peptide of human GRB2

Gene ID

2885

Swiss Prot

P62993

Synonyms

ASH; Grb3-3; MST084; NCKAP2; MSTP084; EGFRBP-GRB2

Reactivity

Human, Mouse, Rat

Application

WB, IHC, ICC/IF, IP

Recommended dilutionWB: 1:2000
IHC: 1:100
ICC/IF: 1:100
IP: 1:20**Calculated MW**

25 kDa

Observed MW

25 kDa

Host species

Rabbit

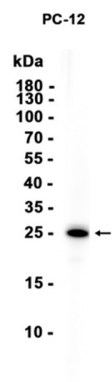
Clonality

Monoclonal

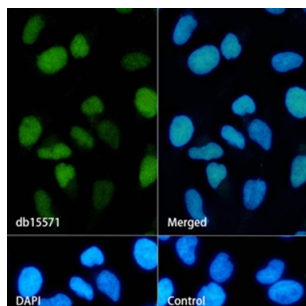
Clonality No.

DGR13455

Isotype	IgG
Purity	Affinity Purification
Conjugation	Un-conjugated
Storage Stability	Store at -20°C. Supplied in 50mM Tris-Glycine(pH 7.4), 0.15M NaCl, 40% Glycerol, 0.01% sodium azide and 0.05% BSA. Stable for 12 months from date of receipt.



Western blot analysis of extracts from PC-12 cells using db15571 at 1:1000.



Immunofluorescence analysis of HeLa cells labelling GRB2 with db15571.

The cells were fixed with 4% PFA (10min, RT) followed by treatment with 0.1% Triton X-100 (10min, RT), and blocked in 1% BSA/10% normal goat serum/0.3M glycine in 0.1% PBS-Tween 20 for 1h. The cells were then incubate with db15571 (1:200) at room temprature for 1h, followed by a further incubation at room temperature for 45min with Goat Anti Rabbit IgG (H+L)-AF488 (db10005, shown in green). Nuclear DNA was labeled in blue with DAPI.

Control: Secondary antibody only.