

Recombinant

DGRmAb®

Cyclin A2 (DGR13292) Rabbit mAb

db15618

Package : 10µL 20µL 50µL 100µL

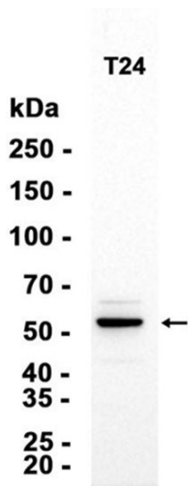
Product Name : Cyclin A2 (DGR13292) Rabbit mAb**Cat.No.:** db15618**Synonyms :** CCN1; CCNA**Application :** WB, IHC-P, ICC/IF, IP**Reactivity :** Human**Host species :** Rabbit

Background	The protein encoded by this gene belongs to the highly conserved cyclin family, whose members function as regulators of the cell cycle. This protein binds and activates cyclin-dependent kinase 2 and thus promotes transition through G1/S and G2/M. [provided by RefSeq, Aug 2016]
Immunogen	Recombinant protein of human Cyclin A2
Gene ID	890
Swiss Prot	P20248
Synonyms	CCN1; CCNA
Reactivity	Human
Application	WB, IHC-P, ICC/IF, IP
Recommended dilution	WB: 1:1000 IHC-P: 1:200-1:2000 ICC/IF: 1:100-1:200 IP: 1:20-1:50
Calculated MW	49 kDa
Observed MW	49 kDa
Host species	Rabbit
Clonality	Monoclonal
Clonality No.	DGR13292
Isotype	IgG
Purity	Affinity Purification

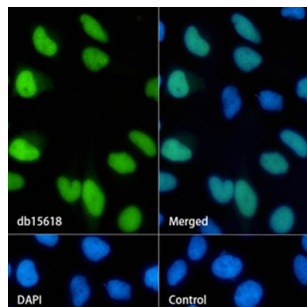
Conjugation	Un-conjugated
Storage Stability	Store at -20°C. Supplied in 50mM Tris-Glycine(pH 7.4), 0.15M NaCl, 40% Glycerol, 0.01% sodium azide and 0.05% BSA. Stable for 12 months from date of receipt.



Western blot analysis of extracts from HeLa cells using db15618 at 1:1000.



Western blot analysis of extracts from T24 cells using db15618 at 1:1000.



Immunofluorescence analysis of HeLa cells labelling Cyclin A2 with db15618.

The cells were fixed with 4% PFA (10min, RT) followed by treatment with 0.1% Triton X-100 (10min, RT), and blocked in 1% BSA/10% normal goat serum/0.3M glycine in 0.1% PBS-Tween 20 for 1h. The cells were then incubate with db15618 (1:200) at room temprature for 1h, followed by a further incubation at room temperature for 45min with Goat Anti Rabbit IgG (H+L)-AF488 (db10005, shown in green). Nuclear DNA was labeled in blue with DAPI.

Control: Secondary antibody only.