

Recombinant

DGRmAb®

## RHEB (DGR13216) Rabbit mAb

db15626

Package : 10µL 20µL 50µL 100µL

**Product Name :** RHEB (DGR13216) Rabbit mAb**Cat.No.:** db15626**Synonyms :** RHEB2**Application :** WB, IHC-P, ICC/IF, FC**Reactivity :** Human**Host species :** Rabbit**Background**

This gene is a member of the small GTPase superfamily and encodes a lipid-anchored, cell membrane protein with five repeats of the RAS-related GTP-binding region. This protein is vital in regulation of growth and cell cycle progression due to its role in the insulin/TOR/S6K signaling pathway. The protein has GTPase activity and shuttles between a GDP-bound form and a GTP-bound form, and farnesylation of the protein is required for this activity. Three pseudogenes have been mapped, two on chromosome 10 and one on chromosome 22. [provided by RefSeq, Jul 2008]

**Immunogen**

A synthetic peptide of human RHEB

**Gene ID**

6009

**Swiss Prot**

Q15382

**Synonyms**

RHEB2

**Reactivity**

Human

**Application**

WB, IHC-P, ICC/IF, FC

**Recommended dilution**

WB: 1:1000-1:5000

IHC-P: 1:200-1:500

ICC/IF: 1:100-1:200

FC: 1:20-1:50

**Calculated MW**

21 kDa

**Observed MW**

21 kDa

**Host species**

Rabbit

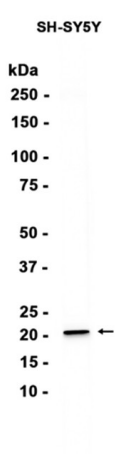
**Clonality**

Monoclonal

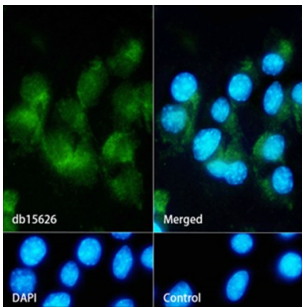
**Clonality No.**

DGR13216

Isotype	IgG
Purity	Affinity Purification
Conjugation	Un-conjugated
Storage Stability	Store at -20°C. Supplied in 50mM Tris-Glycine(pH 7.4), 0.15M NaCl, 40% Glycerol, 0.01% sodium azide and 0.05% BSA. Stable for 12 months from date of receipt.



Western blot analysis of extracts from SH-SY5Y cells using db15626 at 1:1000.



Immunofluorescence analysis of Neuro-2a cells labelling RHEB with db15626.

The cells were fixed with 4% PFA (10min, RT) followed by treatment with 0.1% Triton X-100 (10min, RT), and blocked in 1% BSA/10% normal goat serum/0.3M glycine in 0.1% PBS-Tween 20 for 1h. The cells were then incubate with db15626 (1:200) at room temprature for 1h, followed by a further incubation at room temperature for 45min with Goat Anti Rabbit IgG (H+L)-AF488 (db10005, shown in green). Nuclear DNA was labeled in blue with DAPI.

Control: Secondary antibody only.