

Recombinant

DGRmAb®

SRC3 (DGR13107) Rabbit mAb

db15658

Package : 10µL 20µL 50µL 100µL

Product Name : SRC3 (DGR13107) Rabbit mAb**Cat.No.:** db15658**Synonyms :** ACTR; AIB1; RAC3; SRC3; pCIP; AIB-1; CTG26; SRC-3; CAGH16; KAT13B; TNRC14; TNRC16; TRAM-1; bHLHe42**Application :** WB, IHC-P, ICC/IF, FC**Reactivity :** Human**Host species :** Rabbit**Background**

The protein encoded by this gene is a nuclear receptor coactivator that interacts with nuclear hormone receptors to enhance their transcriptional activator functions. The encoded protein has histone acetyltransferase activity and recruits p300/CBP-associated factor and CREB binding protein as part of a multisubunit coactivation complex. This protein is initially found in the cytoplasm but is translocated into the nucleus upon phosphorylation. Several transcript variants encoding different isoforms have been found for this gene. In addition, a polymorphic repeat region is found in the C-terminus of the encoded protein. [provided by RefSeq, Mar 2010]

Immunogen

A synthetic peptide of human SRC3

Gene ID

8202

Swiss Prot

Q9Y6Q9

Synonyms

ACTR; AIB1; RAC3; SRC3; pCIP; AIB-1; CTG26; SRC-3; CAGH16; KAT13B; TNRC14; TNRC16; TRAM-1; bHLHe42

Reactivity

Human

Application

WB, IHC-P, ICC/IF, FC

Recommended dilutionWB: 1:1000-1:5000
IHC-P: 1:50-1:100
ICC/IF: 1:50-1:100
FC: 1:100-1:500**Calculated MW**

155 kDa

Observed MW

160 kDa

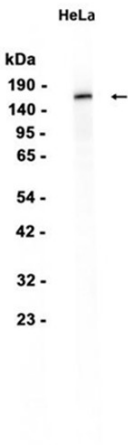
Host species

Rabbit

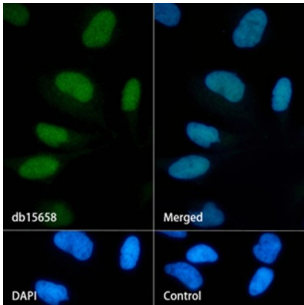
Clonality

Monoclonal

Clonality No.	DGR13107
Isotype	IgG
Purity	Affinity Purification
Conjugation	Un-conjugated
Storage Stability	Store at -20°C. Supplied in 50mM Tris-Glycine(pH 7.4), 0.15M NaCl, 40% Glycerol, 0.01% sodium azide and 0.05% BSA. Stable for 12 months from date of receipt.



Western blot analysis of extracts from HeLa cells using db15658 at 1:1000.



Immunofluorescence analysis of HeLa cells labelling SRC3 with db15658.

The cells were fixed with 4% PFA (10min, RT) followed by treatment with 0.1% Triton X-100 (10min, RT), and blocked in 1% BSA/10% normal goat serum/0.3M glycine in 0.1% PBS-Tween 20 for 1h. The cells were then incubate with db15658 (1:100) at room temprature for 1h, followed by a further incubation at room temperature for 45min with Goat Anti Rabbit IgG (H+L)-AF488 (db10005, shown in green). Nuclear DNA was labeled in blue with DAPI.

Control: Secondary antibody only.