

Recombinant

DGRmAb®

## Fibronectin (DGR13028) Rabbit mAb

db15673

Package : 10µL 20µL 50µL 100µL

**Product Name :** Fibronectin (DGR13028) Rabbit mAb**Cat.No.:** db15673**Synonyms :** FN; CIG; FNZ; MSF; ED-B; FINC; GFND; LETS; GFND2**Application :** WB, IHC-P, ICC/IF, FC**Reactivity :** Human**Host species :** Rabbit**Background**

This gene encodes fibronectin, a glycoprotein present in a soluble dimeric form in plasma, and in a dimeric or multimeric form at the cell surface and in extracellular matrix. The encoded preproprotein is proteolytically processed to generate the mature protein. Fibronectin is involved in cell adhesion and migration processes including embryogenesis, wound healing, blood coagulation, host defense, and metastasis. The gene has three regions subject to alternative splicing, with the potential to produce 20 different transcript variants, at least one of which encodes an isoform that undergoes proteolytic processing. The full-length nature of some variants has not been determined. [provided by RefSeq, Jan 2016]

**Immunogen**

Recombinant protein of human Fibronectin

**Gene ID**

2335

**Swiss Prot**

P02751

**Synonyms**

FN; CIG; FNZ; MSF; ED-B; FINC; GFND; LETS; GFND2

**Reactivity**

Human

**Application**

WB, IHC-P, ICC/IF, FC

**Recommended dilution**

WB: 1:1000

IHC-P: 1:200-1:500

ICC/IF: 1:100

FC: 1:20

**Calculated MW**

263 kDa

**Observed MW**

263 kDa

**Host species**

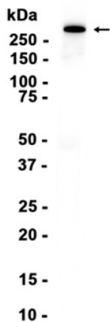
Rabbit

**Clonality**

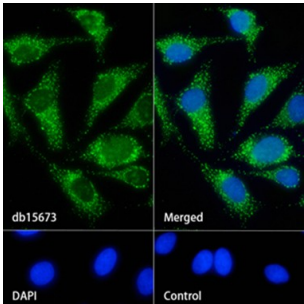
Monoclonal

Clonality No.	DGR13028
Isotype	IgG
Purity	Affinity Purification
Conjugation	Un-conjugated
Storage Stability	Store at -20°C. Supplied in 50mM Tris-Glycine(pH 7.4), 0.15M NaCl, 40% Glycerol, 0.01% sodium azide and 0.05% BSA. Stable for 12 months from date of receipt.

Human plasma



Western blot analysis of extracts from Human plasma tissue using db15673 at 1:1000.



Immunofluorescence analysis of HeLa cells labelling Fibronectin with db15673.

The cells were fixed with 4% PFA (10min, RT) followed by treatment with 0.1% Triton X-100 (10min, RT), and blocked in 1% BSA/10% normal goat serum/0.3M glycine in 0.1% PBS-Tween 20 for 1h. The cells were then incubate with db15673 (1:100) at room temprature for 1h, followed by a further incubation at room temperature for 45min with Goat Anti Rabbit IgG (H+L)-AF488 ([db10005](#), shown in green). Nuclear DNA was labeled in blue with DAPI.

Control: Secondary antibody only.