

Recombinant

DGRmAb®

## alpha 1 Antitrypsin (DGR12015) Rabbit mAb

db15846

Package : 10µL 20µL 50µL 100µL

**Product Name** : alpha 1 Antitrypsin (DGR12015) Rabbit mAb**Cat.No.:** db15846**Synonyms** : PI; A1A; AAT; PI1; A1AT; nNIF; PRO2275; alpha1AT**Application** : WB, IHC-P, ICC/IF, IP**Reactivity** : Human**Host species** : Rabbit**Background**

The protein encoded by this gene is secreted and is a serine protease inhibitor whose targets include elastase, plasmin, thrombin, trypsin, chymotrypsin, and plasminogen activator. Defects in this gene can cause emphysema or liver disease. Several transcript variants encoding the same protein have been found for this gene. [provided by RefSeq, Jul 2008]

**Immunogen**

Recombinant protein of human alpha 1 Antitrypsin

**Gene ID**

5265

**Swiss Prot**

P01009

**Synonyms**

PI; A1A; AAT; PI1; A1AT; nNIF; PRO2275; alpha1AT

**Reactivity**

Human

**Application**

WB, IHC-P, ICC/IF, IP

**Recommended dilution**

WB: 1:1000-1:5000

IHC-P: 1:100-1:200

ICC/IF: 1:50

IP: 1:20

**Calculated MW**

46 kDa

**Observed MW**

55 kDa

**Host species**

Rabbit

**Clonality**

Monoclonal

**Clonality No.**

DGR12015

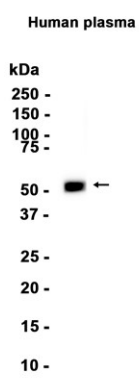
**Isotype**

IgG

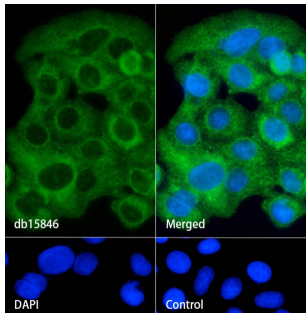
**Purity**

Affinity Purification

Conjugation	Un-conjugated
Storage Stability	Store at -20°C. Supplied in 50mM Tris-Glycine(pH 7.4), 0.15M NaCl, 40% Glycerol, 0.01% sodium azide and 0.05% BSA. Stable for 12 months from date of receipt.



Western blot analysis of extracts from Human plasma tissue using db15846 at 1:100000.



Immunofluorescence analysis of HepG2 cells labelling alpha 1 Antitrypsin with db15846.

The cells were fixed with cold 100% methanol (10min, 4°C) and blocked in 1% BSA/10% normal goat serum/0.3M glycine in 0.1% PBS-Tween 20 for 1h. The cells were then incubate with db15846 (1:50) at room temprature for 1h, followed by a further incubation at room temperature for 45min with Goat Anti Rabbit IgG (H+L)-AF488 (db10005, shown in green). Nuclear DNA was labeled in blue with DAPI.

Control: Secondary antibody only.