

Recombinant

DGRmAb®

CD11b (DGR11985) Rabbit mAb

db15861

Package : 10µL 20µL 50µL 100µL

Product Name : CD11b (DGR11985) Rabbit mAb**Cat.No.:** db15861**Synonyms :** CR3A; MO1A; CD11B; MAC-1; MAC1A; SLEB6**Application :** WB, IHC-P**Reactivity :** Human,Mouse,Rat**Host species :** Rabbit**Background**

This gene encodes the integrin alpha M chain. Integrins are heterodimeric integral membrane proteins composed of an alpha chain and a beta chain. This I-domain containing alpha integrin combines with the beta 2 chain (ITGB2) to form a leukocyte-specific integrin referred to as macrophage receptor 1 ('Mac-1'), or inactivated-C3b (iC3b) receptor 3 ('CR3'). The alpha M beta 2 integrin is important in the adherence of neutrophils and monocytes to stimulated endothelium, and also in the phagocytosis of complement coated particles. Multiple transcript variants encoding different isoforms have been found for this gene. [provided by RefSeq, Mar 2009]

Immunogen

A synthetic peptide of human CD11b

Gene ID

3684

Swiss Prot

P11215

Synonyms

CR3A; MO1A; CD11B; MAC-1; MAC1A; SLEB6

Reactivity

Human,Mouse,Rat

Application

WB, IHC-P

Recommended dilution

WB: 1:1000

IHC-P: 1:500-1:2000

Calculated MW

127 kDa

Observed MW

170 kDa

Host species

Rabbit

Clonality

Monoclonal

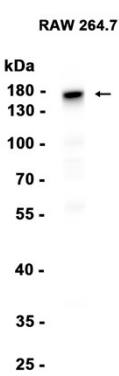
Clonality No.

DGR11985

Isotype

IgG

Purity	Affinity Purification
Conjugation	Un-conjugated
Storage Stability	Store at -20°C. Supplied in 50mM Tris-Glycine(pH 7.4), 0.15M NaCl, 40% Glycerol, 0.01% sodium azide and 0.05% BSA. Stable for 12 months from date of receipt.



Western blot analysis of extracts from RAW264.7 cells using db15861 at 1:1000.