

Recombinant

DGRmAb®

alpha/beta Synuclein (DGR11793) Rabbit mAb

db15907

Package : 10µL 20µL 50µL 100µL

Product Name : alpha/beta Synuclein (DGR11793) Rabbit mAb**Cat.No.:** db15907**Synonyms** : PD1; NACP; PARK1; PARK4**Application** : WB, ICC/IF, FC**Reactivity** : Human,Mouse,Rat**Host species** : Rabbit**Background**

Alpha-synuclein is a member of the synuclein family, which also includes beta- and gamma-synuclein. Synucleins are abundantly expressed in the brain and alpha- and beta-synuclein inhibit phospholipase D2 selectively. SNCA may serve to integrate presynaptic signaling and membrane trafficking. Defects in SNCA have been implicated in the pathogenesis of Parkinson disease. SNCA peptides are a major component of amyloid plaques in the brains of patients with Alzheimer's disease. Alternatively spliced transcripts encoding different isoforms have been identified for this gene. [provided by RefSeq, Feb 2016]

Immunogen

A synthetic peptide of human alpha Synuclein

Gene ID

6622

Swiss Prot

P37840

Synonyms

PD1; NACP; PARK1; PARK4

Reactivity

Human,Mouse,Rat

Application

WB, ICC/IF, FC

Recommended dilution

WB: 1:1000-1:5000

ICC/IF: 1:50-1:100

FC: 1:20-1:50

Calculated MW

14 kDa

Observed MW

18 kDa

Host species

Rabbit

Clonality

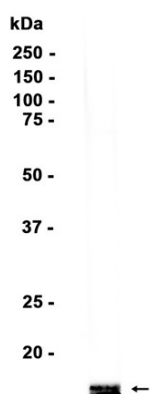
Monoclonal

Clonality No.

DGR11793

Isotype	IgG
Purity	Affinity Purification
Conjugation	Un-conjugated
Storage Stability	Store at -20°C. Supplied in 50mM Tris-Glycine(pH 7.4), 0.15M NaCl, 40% Glycerol, 0.01% sodium azide and 0.05% BSA. Stable for 12 months from date of receipt.

Mouse brain



Western blot analysis of extracts from Mouse brain tissue using db15907 at 1:1000.