

Recombinant

DGRmAb®

MEK1 (DGR11737) Rabbit mAb

db15920

Package : 10µL 20µL 50µL 100µL

Product Name : MEK1 (DGR11737) Rabbit mAb**Cat.No.:** db15920**Synonyms** : CFC3; MEK1; MKK1; MAPKK1; PRKMK1**Application** : WB, IHC-P, ICC/IF, FC, IP**Reactivity** : Human**Host species** : Rabbit**Background**

The protein encoded by this gene is a member of the dual specificity protein kinase family, which acts as a mitogen-activated protein (MAP) kinase kinase. MAP kinases, also known as extracellular signal-regulated kinases (ERKs), act as an integration point for multiple biochemical signals. This protein kinase lies upstream of MAP kinases and stimulates the enzymatic activity of MAP kinases upon wide variety of extra- and intracellular signals. As an essential component of MAP kinase signal transduction pathway, this kinase is involved in many cellular processes such as proliferation, differentiation, transcription regulation and development. [provided by RefSeq, Jul 2008]

Immunogen

A synthetic peptide of human MEK1

Gene ID

5604

Swiss Prot

Q02750

Synonyms

CFC3; MEK1; MKK1; MAPKK1; PRKMK1

Reactivity

Human

Application

WB, IHC-P, ICC/IF, FC, IP

Recommended dilution

WB: 1:1000-1:5000

IHC-P: 1:100

ICC/IF: 1:50

FC: 1:20-1:50

IP: 1:20-1:50

Calculated MW

43 kDa

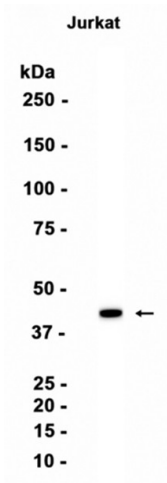
Observed MW

43 kDa

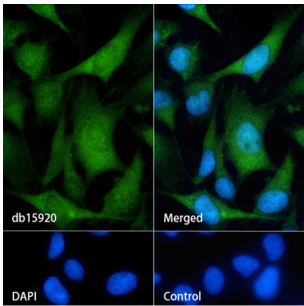
Host species

Rabbit

Clonality	Monoclonal
Clonality No.	DGR11737
Isotype	IgG
Purity	Affinity Purification
Conjugation	Un-conjugated
Storage Stability	Store at -20°C. Supplied in 50mM Tris-Glycine(pH 7.4), 0.15M NaCl, 40% Glycerol, 0.01% sodium azide and 0.05% BSA. Stable for 12 months from date of receipt.



Western blot analysis of extracts from Jurkat cells using db15920 at 1:1000.



Immunofluorescence analysis of HeLa cells labelling MEK1 with db15920.

The cells were fixed with 4% PFA (10min, RT) followed by treatment with 0.1% Triton X-100 (10min, RT), and blocked in 1% BSA/10% normal goat serum/0.3M glycine in 0.1% PBS-Tween 20 for 1h. The cells were then incubate with db15920 (1:50) at room temprature for 1h, followed by a further incubation at room temperature for 45min with Goat Anti Rabbit IgG (H+L)-AF488 (db10005, shown in green). Nuclear DNA was labeled in blue with DAPI.

Control: Secondary antibody only.