

Recombinant

DGRmAb®

CD38 (DGR11645) Rabbit mAb

db15939

Package : 10µL 20µL 50µL 100µL

Product Name : CD38 (DGR11645) Rabbit mAb**Cat.No.:** db15939**Synonyms :** ADPRC1; ADPRC 1**Application :** WB, IHC-P, FC**Reactivity :** Human**Host species :** Rabbit**Background**

The protein encoded by this gene is a non-lineage-restricted, type II transmembrane glycoprotein that synthesizes and hydrolyzes cyclic adenosine 5'-diphosphate-ribose, an intracellular calcium ion mobilizing messenger. The release of soluble protein and the ability of membrane-bound protein to become internalized indicate both extracellular and intracellular functions for the protein. This protein has an N-terminal cytoplasmic tail, a single membrane-spanning domain, and a C-terminal extracellular region with four N-glycosylation sites. Crystal structure analysis demonstrates that the functional molecule is a dimer, with the central portion containing the catalytic site. It is used as a prognostic marker for patients with chronic lymphocytic leukemia. Alternative splicing results in multiple transcript variants. [provided by RefSeq, Sep 2015]

Immunogen

A synthetic peptide of human CD38

Gene ID

952

Swiss Prot

P28907

Synonyms

ADPRC1; ADPRC 1

Reactivity

Human

Application

WB, IHC-P, FC

Recommended dilution

WB: 1:1000

IHC-P: 1:200-1:1000

FC: 1:10-1:100

Calculated MW

34 kDa

Observed MW

45 kDa

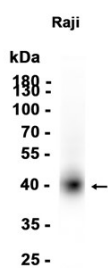
Host species

Rabbit

Clonality

Monoclonal

Clonality No.	DGR11645
Isotype	IgG
Purity	Affinity Purification
Conjugation	Un-conjugated
Storage Stability	Store at -20°C. Supplied in 50mM Tris-Glycine(pH 7.4), 0.15M NaCl, 40% Glycerol, 0.01% sodium azide and 0.05% BSA. Stable for 12 months from date of receipt.



Western blot analysis of extracts from Raji cells using db15939 at 1:1000.