

Recombinant

DGRmAb®

## CAP1 (DGR11569) Rabbit mAb

db15964

Package : 10µL 20µL 50µL 100µL

**Product Name** : CAP1 (DGR11569) Rabbit mAb**Cat.No.:** db15964**Synonyms** : CAP; CAP1-PEN**Application** : WB, IHC-P, ICC/IF**Reactivity** : Human**Host species** : Rabbit**Background**

The protein encoded by this gene is related to the *S. cerevisiae* CAP protein, which is involved in the cyclic AMP pathway. The human protein is able to interact with other molecules of the same protein, as well as with CAP2 and actin. Alternatively spliced transcript variants encoding different isoforms have been identified. [provided by RefSeq, Aug 2016]

**Immunogen**

A synthetic peptide of human CAP1

**Gene ID**

10487

**Swiss Prot**

Q01518

**Synonyms**

CAP; CAP1-PEN

**Reactivity**

Human

**Application**

WB, IHC-P, ICC/IF

**Recommended dilution**

WB: 1:2000-1:20000

IHC-P: 1:100-1:200

ICC/IF: 1:200-1:500

**Calculated MW**

52 kDa

**Observed MW**

52 kDa

**Host species**

Rabbit

**Clonality**

Monoclonal

**Clonality No.**

DGR11569

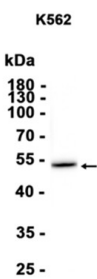
**Isotype**

IgG

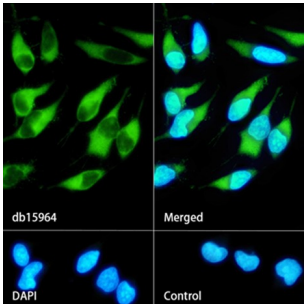
**Purity**

Affinity Purification

|                   |   |
|-------------------|---|
| Conjugation       | Un-conjugated   |
| Storage Stability | Store at -20°C. Supplied in 50mM Tris-Glycine(pH 7.4), 0.15M NaCl, 40% Glycerol, 0.01% sodium azide and 0.05% BSA. Stable for 12 months from date of receipt. |



Western blot analysis of extracts from K562 cells using db15964 at 1:1000.



Immunofluorescence analysis of HeLa cells labelling CAP1 with db15964.

The cells were fixed with cold 100% methanol (10min, 4°C) and blocked in 1% BSA/10% normal goat serum/0.3M glycine in 0.1% PBS-Tween 20 for 1h. The cells were then incubate with db15964 (1:500) at room temprature for 1h, followed by a further incubation at room temperature for 45min with Goat Anti Rabbit IgG (H+L)-AF488 (db10005, shown in green). Nuclear DNA was labeled in blue with DAPI.

Control: Secondary antibody only.