

Recombinant

DGRmAb®

## CDC45L (DGR11553) Rabbit mAb

db15967

Package : 10µL 20µL 50µL 100µL

**Product Name :** CDC45L (DGR11553) Rabbit mAb**Cat.No.:** db15967**Synonyms :** CDC45L; MGORS7; CDC45L2; PORC-PI-1**Application :** WB, IHC-P, ICC/IF**Reactivity :** Human,Mouse,Rat**Host species :** Rabbit**Background**

The protein encoded by this gene was identified by its strong similarity with *Saccharomyces cerevisiae* Cdc45, an essential protein required to the initiation of DNA replication. Cdc45 is a member of the highly conserved multiprotein complex including Cdc6/Cdc18, the minichromosome maintenance proteins (MCMs) and DNA polymerase, which is important for early steps of DNA replication in eukaryotes. This protein has been shown to interact with MCM7 and DNA polymerase alpha. Studies of the similar gene in *Xenopus* suggested that this protein play a pivotal role in the loading of DNA polymerase alpha onto chromatin. Alternate splicing results in multiple transcript variants. [provided by RefSeq, Jul 2013]

**Immunogen**

A synthetic peptide of human CDC45L

**Gene ID**

8318

**Swiss Prot**

O75419

**Synonyms**

CDC45L; MGORS7; CDC45L2; PORC-PI-1

**Reactivity**

Human,Mouse,Rat

**Application**

WB, IHC-P, ICC/IF

**Recommended dilution**

WB: 1:1000-1:5000

IHC-P: 1:100-1:200

ICC/IF: 1:100-1:200

**Calculated MW**

66 kDa

**Observed MW**

66 kDa

**Host species**

Rabbit

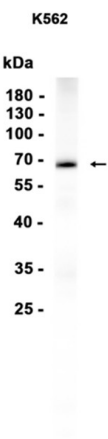
**Clonality**

Monoclonal

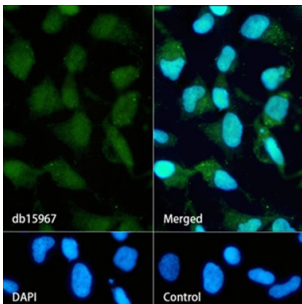
**Clonality No.**

DGR11553

Isotype	IgG
Purity	Affinity Purification
Conjugation	Un-conjugated
Storage Stability	Store at -20°C. Supplied in 50mM Tris-Glycine(pH 7.4), 0.15M NaCl, 40% Glycerol, 0.01% sodium azide and 0.05% BSA. Stable for 12 months from date of receipt.



Western blot analysis of extracts from K562 cells using db15967 at 1:1000.



Immunofluorescence analysis of HeLa cells labelling CDC45L with db15967.

The cells were fixed with 4% PFA (10min, RT) followed by treatment with 0.1% Triton X-100 (10min, RT), and blocked in 1% BSA/10% normal goat serum/0.3M glycine in 0.1% PBS-Tween 20 for 1h. The cells were then incubate with db15967 (1:200) at room temprature for 1h, followed by a further incubation at room temperature for 45min with Goat Anti Rabbit IgG (H+L)-AF488 (db10005, shown in green). Nuclear DNA was labeled in blue with DAPI.

Control: Secondary antibody only.