

Recombinant

DGRmAb®

**METTL3 (DGR11429) Rabbit mAb**

db15992

Package : 10µL 20µL 50µL 100µL

**Product Name** : METTL3 (DGR11429) Rabbit mAb**Cat.No.:** db15992**Synonyms** : M6A; IME4; Spo8; MT-A70; hMETTL3**Application** : WB, IHC, ICC/IF, FC, IP**Reactivity** : Human, Mouse, Rat**Host species** : Rabbit

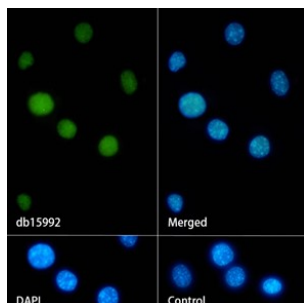
<b>Background</b>	This gene encodes the 70 kDa subunit of MT-A which is part of N6-adenosine-methyltransferase. This enzyme is involved in the posttranscriptional methylation of internal adenosine residues in eukaryotic mRNAs, forming N6-methyladenosine. [provided by RefSeq, Jul 2008]
<b>Immunogen</b>	Recombinant protein of human METTL3
<b>Gene ID</b>	56339
<b>Swiss Prot</b>	Q86U44
<b>Synonyms</b>	M6A; IME4; Spo8; MT-A70; hMETTL3
<b>Reactivity</b>	Human, Mouse, Rat
<b>Application</b>	WB, IHC, ICC/IF, FC, IP
<b>Recommended dilution</b>	WB: 1:1000 IHC: 1:200-1:500 ICC/IF: 1:200-1:500 FC: 1:20 IP: 1:20
<b>Calculated MW</b>	64 kDa
<b>Observed MW</b>	64 kDa
<b>Host species</b>	Rabbit
<b>Clonality</b>	Monoclonal
<b>Clonality No.</b>	DGR11429
<b>Isotype</b>	IgG
<b>Purity</b>	Affinity Purification

**Conjugation**

Un-conjugated

**Storage Stability**

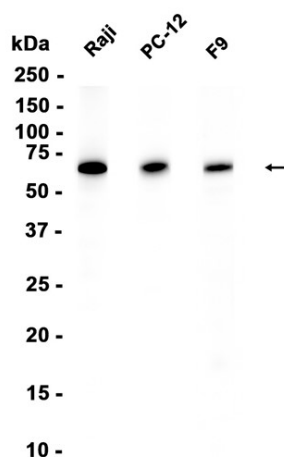
Store at -20°C. Supplied in 50mM Tris-Glycine(pH 7.4), 0.15M NaCl, 40% Glycerol, 0.01% sodium azide and 0.05% BSA. Stable for 12 months from date of receipt.



Immunofluorescence analysis of NIH/3T3 cells labelling METTL3 with db15992.

The cells were fixed with 4% PFA (10min, RT) followed by treatment with 0.1% Triton X-100 (10min, RT), and blocked in 1% BSA/10% normal goat serum/0.3M glycine in 0.1% PBS-Tween 20 for 1h. The cells were then incubate with db15992(1:500) at room temperature for 1h, followed by a further incubation at room temperature for 45min with Goat Anti Rabbit IgG (H+L)-AF488 (db10005, shown in green). Nuclear DNA was labeled in blue with DAPI.

Control: Secondary antibody only.



Western blot analysis of extracts from Raji,PC-12,F9 cells using db15992 at 1:1000.