

Recombinant

DGRmAb®

## MEF2C (DGR11416) Rabbit mAb

db15999

Package : 10µL 20µL 50µL 100µL

**Product Name :** MEF2C (DGR11416) Rabbit mAb**Cat.No.:** db15999**Synonyms :** DEL5q14.3; C5DELq14.3**Application :** WB, IHC-P**Reactivity :** Human,Rat**Host species :** Rabbit**Background**

This locus encodes a member of the MADS box transcription enhancer factor 2 (MEF2) family of proteins, which play a role in myogenesis. The encoded protein, MEF2 polypeptide C, has both trans-activating and DNA binding activities. This protein may play a role in maintaining the differentiated state of muscle cells. Mutations and deletions at this locus have been associated with severe cognitive disability, stereotypic movements, epilepsy, and cerebral malformation. Alternatively spliced transcript variants have been described. [provided by RefSeq, Jul 2010]

**Immunogen**

A synthetic peptide of human MEF2C

**Gene ID**

4208

**Swiss Prot**

Q06413

**Synonyms**

DEL5q14.3; C5DELq14.3

**Reactivity**

Human,Rat

**Application**

WB, IHC-P

**Recommended dilution**WB: 1:1000  
IHC-P: 1:200-1:1000**Calculated MW**

51 kDa

**Observed MW**

50-60 kDa

**Host species**

Rabbit

**Clonality**

Monoclonal

**Clonality No.**

DGR11416

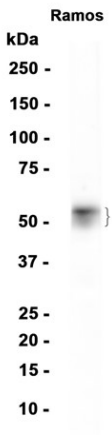
**Isotype**

IgG

**Purity**

Affinity Purification

Conjugation	Un-conjugated
Storage Stability	Store at -20°C. Supplied in 50mM Tris-Glycine(pH 7.4), 0.15M NaCl, 40% Glycerol, 0.01% sodium azide and 0.05% BSA. Stable for 12 months from date of receipt.



Western blot analysis of extracts from Ramos cells using db15999 at 1:1000.