

Recombinant

DGRmAb[®]

Bcl-XL (DGR11336) Rabbit mAb

db16019

Package : 10µL 20µL 50µL 100µL

Product Name : Bcl-XL (DGR11336) Rabbit mAb

Cat.No.: db16019

Synonyms : BCLX; BCL2L; Bcl-X; PPP1R52; BCL-XL/S

Application : WB, IHC-P, ICC/IF, FC, IP

Reactivity : Human,Mouse,Rat

Host species : Rabbit

Background

The protein encoded by this gene belongs to the BCL-2 protein family. BCL-2 family members form hetero- or homodimers and act as anti- or pro-apoptotic regulators that are involved in a wide variety of cellular activities. The proteins encoded by this gene are located at the outer mitochondrial membrane, and have been shown to regulate outer mitochondrial membrane channel (VDAC) opening. VDAC regulates mitochondrial membrane potential, and thus controls the production of reactive oxygen species and release of cytochrome C by mitochondria, both of which are the potent inducers of cell apoptosis. Alternative splicing results in multiple transcript variants encoding two different isoforms. The longer isoform acts as an apoptotic inhibitor and the shorter isoform acts as an apoptotic activator. [provided by RefSeq, Dec 2015]

Immunogen

A synthetic peptide of human Bcl-XL

Gene ID

598

Swiss Prot

Q07817

Synonyms

BCLX; BCL2L; Bcl-X; PPP1R52; BCL-XL/S

Reactivity

Human,Mouse,Rat

Application

WB, IHC-P, ICC/IF, FC, IP

Recommended dilution

WB: 1:1000
 IHC-P: 1:200-1:2000
 ICC/IF: 1:100-1:500
 FC: 1:20-1:100
 IP: 1:10-1:50

Calculated MW

26 kDa

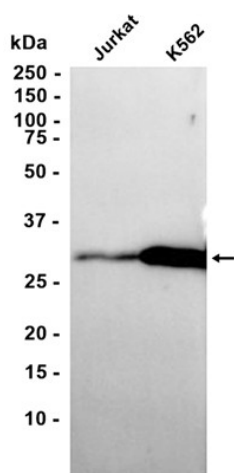
Observed MW

30 kDa

Host species

Rabbit

Clonality	Monoclonal
Clonality No.	DGR11336
Isotype	IgG
Purity	Affinity Purification
Conjugation	Un-conjugated
Storage Stability	Store at -20°C. Supplied in 50mM Tris-Glycine(pH 7.4), 0.15M NaCl, 40% Glycerol, 0.01% sodium azide and 0.05% BSA. Stable for 12 months from date of receipt.



Western blot analysis of extracts from Jurkat, K562 cells using db16019 at 1:1000.