

Recombinant

DGRmAb®

GDF15 (DGR11326) Rabbit mAb

db16020

Package : 10µL 20µL 50µL 100µL

Product Name : GDF15 (DGR11326) Rabbit mAb**Cat.No.:** db16020**Synonyms** : PDF; MIC1; PLAB; MIC-1; NAG-1; PTGFB; GDF-15**Application** : WB, IHC-P, IP**Reactivity** : Human**Host species** : Rabbit**Background**

This gene encodes a secreted ligand of the TGF-beta (transforming growth factor-beta) superfamily of proteins. Ligands of this family bind various TGF-beta receptors leading to recruitment and activation of SMAD family transcription factors that regulate gene expression. The encoded preproprotein is proteolytically processed to generate each subunit of the disulfide-linked homodimer. The protein is expressed in a broad range of cell types, acts as a pleiotropic cytokine and is involved in the stress response program of cells after cellular injury. Increased protein levels are associated with disease states such as tissue hypoxia, inflammation, acute injury and oxidative stress. [provided by RefSeq, Aug 2016]

Immunogen

Recombinant protein of human GDF15

Gene ID

9518

Swiss Prot

Q99988

Synonyms

PDF; MIC1; PLAB; MIC-1; NAG-1; PTGFB; GDF-15

Reactivity

Human

Application

WB, IHC-P, IP

Recommended dilutionWB: 1:1000
IHC-P: 1:100
IP: 1:20-1:50**Calculated MW**

34 kDa

Observed MW

35,13 kDa

Host species

Rabbit

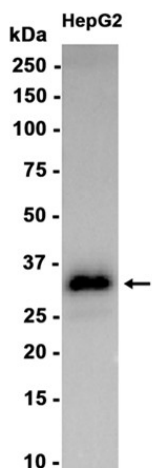
Clonality

Monoclonal

Clonality No.

DGR11326

Isotype	IgG
Purity	Affinity Purification
Conjugation	Un-conjugated
Storage Stability	Store at -20°C. Supplied in 50mM Tris-Glycine(pH 7.4), 0.15M NaCl, 40% Glycerol, 0.01% sodium azide and 0.05% BSA. Stable for 12 months from date of receipt.



Western blot analysis of extracts from HepG2 cells using db16020 at 1:1000.