

Recombinant

DGRmAb®

C1QA (DGR11143) Rabbit mAb

db16070

Package : 10µL 20µL 50µL 100µL

Product Name : C1QA (DGR11143) Rabbit mAb**Cat.No.:** db16070**Synonyms** : Complement C1q subcomponent subunit A**Application** : WB, IHC-P**Reactivity** : Human,Rat**Host species** : Rabbit**Background**

This gene encodes the A-chain polypeptide of serum complement subcomponent C1q, which associates with C1r and C1s to yield the first component of the serum complement system. C1q deficiency is associated with lupus erythematosus and glomerulonephritis. C1q is composed of 18 polypeptide chains which include 6 A-chains, 6 B-chains, and 6 C-chains. Each chain contains an N-terminal collagen-like region and a C-terminal C1q globular domain. Alternate splicing results in multiple transcript variants. [provided by RefSeq, Nov 2016]

Immunogen

Recombinant protein of human C1QA

Gene ID

712

Swiss Prot

P02745

Synonyms

Complement C1q subcomponent subunit A

Reactivity

Human,Rat

Application

WB, IHC-P

Recommended dilution

WB: 1:1000-1:5000

IHC-P: 1:200-1:1000

Calculated MW

26 kDa

Observed MW

26 kDa

Host species

Rabbit

Clonality

Monoclonal

Clonality No.

DGR11143

Isotype

IgG

Purity

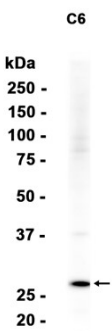
Affinity Purification

Conjugation

Un-conjugated

Storage Stability

Store at -20°C. Supplied in 50mM Tris-Glycine(pH 7.4), 0.15M NaCl, 40% Glycerol, 0.01% sodium azide and 0.05% BSA. Stable for 12 months from date of receipt.



Western blot analysis of extracts from C6 cells using db16070 at 1:1000.