

Recombinant

DGRmAb®

Apolipoprotein E (DGR11112) Rabbit mAb

db16076

Package : 10µL 20µL 50µL 100µL

Product Name : Apolipoprotein E (DGR11112) Rabbit mAb**Cat.No.:** db16076**Synonyms** : AD2; LPG; APO-E; ApoE4; LDLCQ5**Application** : WB, IHC-P, ICC/IF, FC, IP**Reactivity** : Human**Host species** : Rabbit**Background**

The protein encoded by this gene is a major apoprotein of the chylomicron. It binds to a specific liver and peripheral cell receptor, and is essential for the normal catabolism of triglyceride-rich lipoprotein constituents. This gene maps to chromosome 19 in a cluster with the related apolipoprotein C1 and C2 genes. Mutations in this gene result in familial dysbetalipoproteinemia, or type III hyperlipoproteinemia (HLP III), in which increased plasma cholesterol and triglycerides are the consequence of impaired clearance of chylomicron and VLDL remnants. [provided by RefSeq, Jun 2016]

Immunogen

A synthetic peptide of human Apolipoprotein E

Gene ID

348

Swiss Prot

P02649

Synonyms

AD2; LPG; APO-E; ApoE4; LDLCQ5

Reactivity

Human

Application

WB, IHC-P, ICC/IF, FC, IP

Recommended dilution

WB: 1:1000

IHC-P: 1:100-1:200

ICC/IF: 1:50

FC: 1:20

IP: 1:20-1:50

Calculated MW

36 kDa

Observed MW

36 kDa

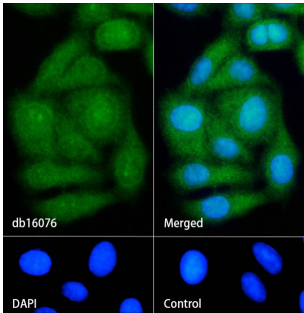
Host species

Rabbit

Clonality

Monoclonal

| | |
|-------------------|---|
| Clonality No. | DGR11112 |
| Isotype | IgG |
| Purity | Affinity Purification |
| Conjugation | Un-conjugated |
| Storage Stability | Store at -20°C. Supplied in 50mM Tris-Glycine(pH 7.4), 0.15M NaCl, 40% Glycerol, 0.01% sodium azide and 0.05% BSA. Stable for 12 months from date of receipt. |



Immunofluorescence analysis of HepG2 cells labelling Apolipoprotein E with db16076.

The cells were fixed with cold 100% methanol (10min, 4℃) and blocked in 1% BSA/10% normal goat serum/0.3M glycine in 0.1% PBS-Tween 20 for 1h. The cells were then incubate with db16076 (1:50) at room temprature for 1h, followed by a further incubation at room temperature for 45min with Goat Anti Rabbit IgG (H+L)-AF488 (db10005, shown in green). Nuclear DNA was labeled in blue with DAPI.

Control: Secondary antibody only.