

Recombinant

DGRmAb®

## GPER1 (DGR35519) Rabbit mAb

db16148

Package : 10µL 20µL 50µL 100µL

**Product Name :** GPER1 (DGR35519) Rabbit mAb**Cat.No.:** db16148**Synonyms :** mER; CEPR; GPER; DRY12; FEG-1; GPR30; LERGU; LyGPR; CMKRL2; LERGU2; GPCR-Br**Application :** WB, IHC-P**Reactivity :** Human,Mouse,Rat**Host species :** Rabbit**Background**

This gene encodes a multi-pass membrane protein that localizes to the endoplasmic reticulum and a member of the G-protein coupled receptor 1 family. This receptor binds estrogen and activates multiple downstream signaling pathways, leading to stimulation of adenylate cyclase and an increase in cyclic AMP levels, while also promoting intracellular calcium mobilization and synthesis of phosphatidylinositol 3,4,5-trisphosphate in the nucleus. This protein therefore plays a role in the rapid nongenomic signaling events widely observed following stimulation of cells and tissues with estrogen. This receptor has been shown to play a role in diverse biological processes, including bone and nervous system development, metabolism, cognition, male fertility and uterine function. [provided by RefSeq, Aug 2017]

**Immunogen**

A synthetic peptide of human GPER1

**Gene ID**

2852, 76854, 171104

**Swiss Prot**

Q99527, Q8BMP4, O08878

**Synonyms**

mER; CEPR; GPER; DRY12; FEG-1; GPR30; LERGU; LyGPR; CMKRL2; LERGU2; GPCR-Br

**Reactivity**

Human,Mouse,Rat

**Application**

WB, IHC-P

**Recommended dilution**

WB: 1:1000

IHC-P: 1:100-1:200

**Calculated MW**

42 kDa

**Observed MW**

55 kDa

**Host species**

Rabbit

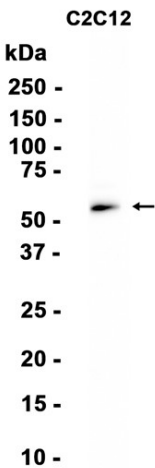
**Clonality**

Monoclonal

**Clonality No.**

DGR35519

Isotype	IgG
Purity	Affinity Purification
Conjugation	Un-conjugated
Storage Stability	Store at -20°C. Supplied in 50mM Tris-Glycine(pH 7.4), 0.15M NaCl, 40% Glycerol, 0.01% sodium azide and 0.05% BSA. Stable for 12 months from date of receipt.



Western blot analysis of extracts from C2C12 cells using db16148 at 1:500.