

Recombinant

DGRmAb®

SLC1A5 (DGR19941) Rabbit mAb

db16157

Package : 10µL 20µL 50µL 100µL

Product Name : SLC1A5 (DGR19941) Rabbit mAb**Cat.No.:** db16157**Synonyms :** R16; AAAT; ATBO; M7V1; RDRC; ASCT2; M7VS1**Application :** WB, IHC-P, ICC/IF, FC, IP**Reactivity :** Human**Host species :** Rabbit

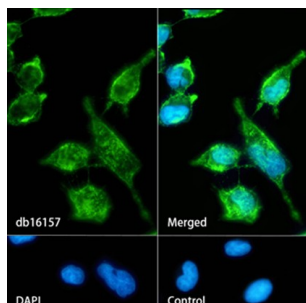
Background	The SLC1A5 gene encodes a sodium-dependent neutral amino acid transporter that can act as a receptor for RD114/type D retrovirus (Larriba et al., 2001 [PubMed 11781704]).[supplied by OMIM, Jan 2011]
Immunogen	A synthetic peptide of human SLC1A5
Gene ID	6510
Swiss Prot	Q15758
Synonyms	R16; AAAT; ATBO; M7V1; RDRC; ASCT2; M7VS1
Reactivity	Human
Application	WB, IHC-P, ICC/IF, FC, IP
Recommended dilution	WB: 1:1000 IHC-P: 1:200-1:2000 ICC/IF: 1:50 FC: 1:20-1:50 IP: 1:20-1:50
Calculated MW	57 kDa
Observed MW	70-75 kDa
Host species	Rabbit
Clonality	Monoclonal
Clonality No.	DGR19941
Isotype	IgG
Purity	Affinity Purification

Conjugation

Un-conjugated

Storage Stability

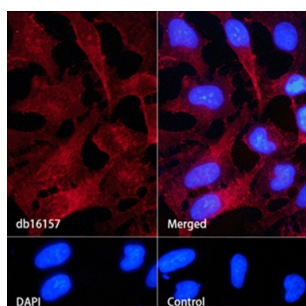
Store at -20°C. Supplied in 50mM Tris-Glycine(pH 7.4), 0.15M NaCl, 40% Glycerol, 0.01% sodium azide and 0.05% BSA. Stable for 12 months from date of receipt.



Immunofluorescence analysis of HeLa cells labelling SLC1A5 with db16157.

The cells were fixed with cold 100% methanol (10min, 4°C) and blocked in 1% BSA/10% normal goat serum/0.3M glycine in 0.1% PBS-Tween 20 for 1h. The cells were then incubate with db16157 (1:50) at room temprature for 1h, followed by a further incubation at room temperature for 45min with Goat Anti Rabbit IgG (H+L)-AF488 (db10005, shown in green). Nuclear DNA was labeled in blue with DAPI.

Control: Secondary antibody only.



Immunofluorescence analysis of HeLa cells labelling SLC1A5 with db16157.

The cells were fixed with 4% PFA (10min, RT) followed by treatment with 0.1% Triton X-100 (10min, RT), and blocked in 1% BSA/10% normal goat serum/0.3M glycine in 0.1% PBS-Tween 20 for 1h. The cells were then incubate with db16157 (1:50) at room temprature for 1h, followed by a further incubation at room temperature for 45min with Goat Anti Rabbit IgG (H+L)-AF647(db10006, shown in red). Nuclear DNA was labeled in blue with DAPI.

Control: Secondary antibody only.