

Recombinant

DGRmAb®

Lamin B1 (DGR16498) Rabbit mAb

db16165

Package : 10µL 20µL 50µL 100µL

Product Name : Lamin B1 (DGR16498) Rabbit mAb

Cat.No.: db16165

Synonyms : LMN; ADLD; LMN2; LMNB; MCPH26

Application : WB, IHC-P, ICC/IF, FC, IP

Reactivity : Human,Mouse,Rat

Host species : Rabbit

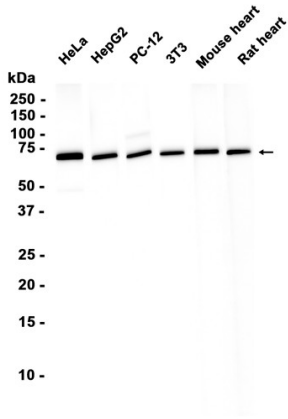
Background	This gene encodes one of the two B-type lamin proteins and is a component of the nuclear lamina. A duplication of this gene is associated with autosomal dominant adult-onset leukodystrophy (ADLD). Alternative splicing results in multiple transcript variants. [provided by RefSeq, Dec 2015]
Immunogen	Recombinant protein of human Lamin B1
Gene ID	4001, 16906, 116685
Swiss Prot	P20700, P14733, P70615
Synonyms	LMN; ADLD; LMN2; LMNB; MCPH26
Reactivity	Human,Mouse,Rat
Application	WB, IHC-P, ICC/IF, FC, IP
Recommended dilution	WB: 1:1000 IHC-P: 1:200-1:2000 ICC/IF: 1:500-1:1000 FC: 1:200-1:500 IP: 1:20-1:50
Calculated MW	66 kDa
Observed MW	70 kDa
Host species	Rabbit
Clonality	Monoclonal
Clonality No.	DGR16498
Isotype	IgG
Purity	Affinity Purification

Conjugation

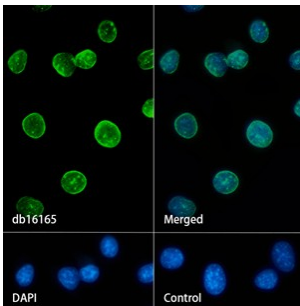
Un-conjugated

Storage Stability

Store at -20°C. Supplied in 50mM Tris-Glycine(pH 7.4), 0.15M NaCl, 40% Glycerol, 0.01% sodium azide and 0.05% BSA. Stable for 12 months from date of receipt.



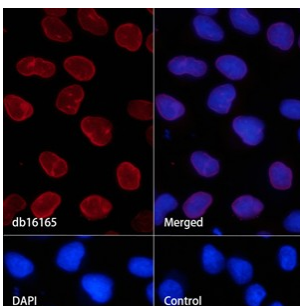
Western blot analysis of extracts from HeLa, HepG2, PC-12, 3T3 cells and Mouse heart, Rat heart tissues using db16165 at 1:1000.



Immunofluorescence analysis of 3T3 cells labelling Lamin B1 with db16165.

The cells were fixed with cold 100% methanol (10min, 4°C) and blocked in 1% BSA/10% normal goat serum/0.3M glycine in 0.1% PBS-Tween 20 for 1h. The cells were then incubate with db16165 (1:500) at room temprature for 1h, followed by a further incubation at room temperature for 45min with Goat Anti Rabbit IgG (H+L)-AF488 (db10005, shown in green). Nuclear DNA was labeled in blue with DAPI.

Control: Secondary antibody only.



Immunofluorescence analysis of HeLa cells labelling Lamin B1 with db16165.

The cells were fixed with cold 100% methanol (10min, 4°C) and blocked in 1% BSA/10% normal goat serum/0.3M glycine in 0.1% PBS-Tween 20 for 1h. The cells were then incubate with db16165 (1:500) at room temprature for 1h, followed by a further incubation at room temperature for 45min with Goat Anti Rabbit IgG (H+L)-AF647(db10006, shown in red). Nuclear DNA was labeled in blue with DAPI.

Control: Secondary antibody only.