

Recombinant

DGRmAb®

## CAPG (DGR36030) Rabbit mAb

db16265

Package : 10µL 20µL 50µL 100µL

**Product Name :** CAPG (DGR36030) Rabbit mAb**Cat.No.:** db16265**Synonyms :** MCP; AFCP; HEL-S-66**Application :** WB**Reactivity :** Human, Mouse, Rat**Host species :** Rabbit**Background**

This gene encodes a member of the gelsolin/villin family of actin-regulatory proteins. The encoded protein reversibly blocks the barbed ends of F-actin filaments in a Ca<sup>2+</sup> and phosphoinositide-regulated manner, but does not sever preformed actin filaments. By capping the barbed ends of actin filaments, the encoded protein contributes to the control of actin-based motility in non-muscle cells. Alternatively spliced transcript variants have been observed for this gene. [provided by RefSeq, Jan 2012]

**Immunogen**

Recombinant protein of human CAPG

**Gene ID**

822, 12332, 297339

**Swiss Prot**

P40121, P24452, Q6AYC4

**Synonyms**

MCP; AFCP; HEL-S-66

**Reactivity**

Human, Mouse, Rat

**Application**

WB

**Recommended dilution**

WB: 1:2000-1:20000

**Calculated MW**

39 kDa

**Observed MW**

39 kDa

**Host species**

Rabbit

**Clonality**

Monoclonal

**Clonality No.**

DGR36030

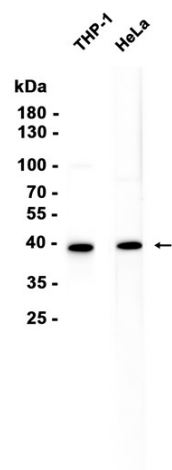
**Isotype**

IgG

**Purity**

Affinity Purification

Conjugation	Un-conjugated
Storage Stability	Store at -20°C. Supplied in 50mM Tris-Glycine(pH 7.4), 0.15M NaCl, 40% Glycerol, 0.01% sodium azide and 0.05% BSA. Stable for 12 months from date of receipt.



Western blot analysis of extracts from THP-1, HeLa cells using db16265 at 1:1000.