

Recombinant

DGRmAb®

**ALAS1 (DGR36034) Rabbit mAb**

db16269

Package : 10µL 20µL 50µL 100µL

**Product Name** : ALAS1 (DGR36034) Rabbit mAb**Cat.No.:** db16269**Synonyms** : ALAS; MIG4; ALAS3; ALASH; ALAS-H**Application** : WB, IHC-P**Reactivity** : Human**Host species** : Rabbit**Background**

This gene encodes the mitochondrial enzyme which catalyzes the rate-limiting step in heme (iron-protoporphyrin) biosynthesis. The enzyme encoded by this gene is the housekeeping enzyme; a separate gene encodes a form of the enzyme that is specific for erythroid tissue. The level of the mature encoded protein is regulated by heme: high levels of heme down-regulate the mature enzyme in mitochondria while low heme levels up-regulate. A pseudogene of this gene is located on chromosome 12. Alternative splicing results in multiple transcript variants encoding different isoforms. [provided by RefSeq, Jan 2015]

**Immunogen**

A synthetic peptide of human ALAS1

**Gene ID**

211

**Swiss Prot**

P13196

**Synonyms**

ALAS; MIG4; ALAS3; ALASH; ALAS-H

**Reactivity**

Human

**Application**

WB, IHC-P

**Recommended dilution**

WB: 1:1000-1:5000

IHC-P: 1:200-1:500

**Calculated MW**

71 kDa

**Observed MW**

71 kDa

**Host species**

Rabbit

**Clonality**

Monoclonal

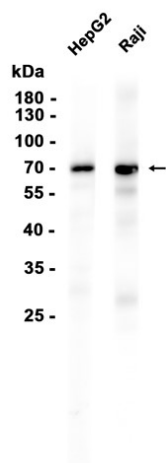
**Clonality No.**

DGR36034

**Isotype**

IgG

Purity	Affinity Purification
Conjugation	Un-conjugated
Storage Stability	Store at -20°C. Supplied in 50mM Tris-Glycine(pH 7.4), 0.15M NaCl, 40% Glycerol, 0.01% sodium azide and 0.05% BSA. Stable for 12 months from date of receipt.



Western blot analysis of extracts from HepG2, Raji cells using db16269 at 1:1000.