

Recombinant

DGRmAb®

PTPRH (DGR34782) Rabbit mAb

db16626

Package : 10µL 20µL 50µL 100µL

Product Name : PTPRH (DGR34782) Rabbit mAb**Cat.No.:** db16626**Synonyms :** SAP1; R-PTP-H**Application :** WB, ICC/IF**Reactivity :** Human**Host species :** Rabbit**Background**

The protein encoded by this gene is a member of the protein tyrosine phosphatase (PTP) family. PTPs are known to be signaling molecules that regulate a variety of cellular processes including cell growth, differentiation, mitotic cycle, and oncogenic transformation. This PTP possesses an extracellular region, a single transmembrane region, and a single intracytoplasmic catalytic domain, and thus represents a receptor-type PTP. The extracellular region contains eight fibronectin type III-like repeats and multiple N-glycosylation sites. The gene was shown to be expressed primarily in brain and liver, and at a lower level in heart and stomach. It was also found to be expressed in several cancer cell lines, but not in the corresponding normal tissues. Alternative splicing results in multiple transcript variants. [provided by RefSeq, Jun 2009]

Immunogen

A synthetic peptide of human PTPRH

Gene ID

5794

Swiss Prot

Q9HD43

Synonyms

SAP1; R-PTP-H

Reactivity

Human

Application

WB, ICC/IF

Recommended dilution

WB: 1:1000

ICC/IF: 1:50-1:100

Calculated MW

122 kDa

Observed MW

≥200 kDa

Host species

Rabbit

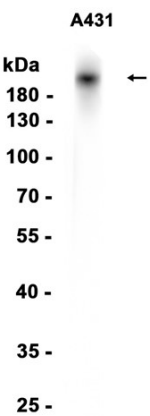
Clonality

Monoclonal

Clonality No.

DGR34782

| | |
|-------------------|---|
| Isotype | IgG |
| Purity | Affinity Purification |
| Conjugation | Un-conjugated |
| Storage Stability | Store at -20°C. Supplied in 50mM Tris-Glycine(pH 7.4), 0.15M NaCl, 40% Glycerol, 0.01% sodium azide and 0.05% BSA. Stable for 12 months from date of receipt. |



Western blot analysis of extracts from A431 cells using db16626 at 1:1000.