

Recombinant

DGRmAb®

BATF (DGR16366) Rabbit mAb

db16630

Package : 10µL 20µL 50µL 100µL

Product Name : BATF (DGR16366) Rabbit mAb**Cat.No.:** db16630**Synonyms** : SFA2; B-ATF; BATF1; SFA-2**Application** : WB, ICC/IF, FC, IP**Reactivity** : Human, Mouse**Host species** : Rabbit

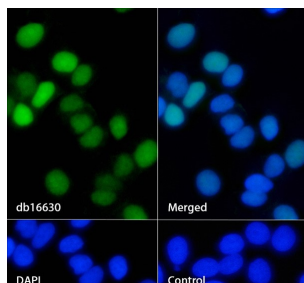
Background	The protein encoded by this gene is a nuclear basic leucine zipper protein that belongs to the AP-1/ATF superfamily of transcription factors. The leucine zipper of this protein mediates dimerization with members of the Jun family of proteins. This protein is thought to be a negative regulator of AP-1/ATF transcriptional events. [provided by RefSeq, Jul 2008]
Immunogen	Recombinant protein of human BATF
Gene ID	10538
Swiss Prot	Q16520
Synonyms	SFA2; B-ATF; BATF1; SFA-2
Reactivity	Human, Mouse
Application	WB, ICC/IF, FC, IP
Recommended dilution	WB: 1:1000 ICC/IF: 1:100 FC: 1:200-1:500 IP: 1:20-1:50
Calculated MW	14 kDa
Observed MW	15 kDa
Host species	Rabbit
Clonality	Monoclonal
Clonality No.	DGR16366
Isotype	IgG
Purity	Affinity Purification

Conjugation

Un-conjugated

Storage Stability

Store at -20°C. Supplied in 50mM Tris-Glycine(pH 7.4), 0.15M NaCl, 40% Glycerol, 0.01% sodium azide and 0.05% BSA. Stable for 12 months from date of receipt.



Immunofluorescence analysis of MCF-7 cells labelling BATF with db16630.

The cells were fixed with 4% PFA (10min, RT) followed by treatment with 0.1% Triton X-100 (10min, RT), and blocked in 1% BSA/10% normal goat serum/0.3M glycine in 0.1% PBS-Tween 20 for 1h. The cells were then incubate with db16630 (1:100) at room temprature for 1h, followed by a further incubation at room temperature for 45min with Goat Anti Rabbit IgG (H+L)-AF488 (db10005, shown in green). Nuclear DNA was labeled in blue with DAPI.

Control: Secondary antibody only.