

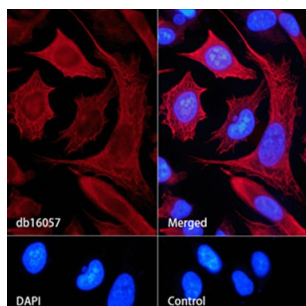
Goat Anti Rabbit IgG (H+L)-AF647

db10006

Package : 100μL

Product Name : Goat Anti Rabbit IgG (H+L)-AF647**Cat.No.:** db10006**Application** : ICC/IF, IHC-F, IHC-P, FC, ELISA**Reactivity** : Rabbit**Host species** : Goat

Background	Secondary antibodies providesignal detection and amplification along with extending the utility of anantibody through conjugation to proteins. Secondary antibodies bind to primaryantibodies, which are directly bound to the target antigen(s).
Immunogen	Rabbit IgG
Reactivity	Rabbit
Application	ICC/IF, IHC-F, IHC-P, FC, ELISA
Recommended dilution	ICC/IF: 1:200-1:1000 IHC-P: 1:200-1:1000 IHC-F: 1:200-1:1000 FC: 1:200-1:1000 ELISA: 1:2000-1:20000
Host species	Goat
Clonality	Polyclonal
Isotype	IgG
Purity	Affinity Purification
Conjugation	AF647
Storage Stability	Store at -20°C. Supplied in PBS, 50% Glycerol, 0.1% BSA. Stable for 12 months from date of receipt.



Immunofluorescence analysis of HeLa cells labelling Cytokeratin 8 with [db16057](#).

The cells were fixed with cold 100% methanol (10min, 4℃) and blocked in 1% BSA/10% normal goat serum/0.3M glycine in 0.1% PBS-Tween 20 for 1h. The cells were then incubate with [db16057](#) (1:500) at room temprature for 1h, followed by a further incubation at room temperature for 45min with Goat Anti Rabbit IgG (H+L)-AF647 (db10006, shown in red). Nuclear DNA was labeled in blue with DAPI.

Control: Secondary antibody only.